



Data Center Solutions



Powering AI-ready digital infrastructure



Research and Development
780* patents (as on Q3 FY26)



World class manufacturing facilities in North America, Europe and Asia



Advanced product offerings to build Data Centers, FTTx, 5G, Rural, Enterprise

Leading the Digital Infrastructure Shift across Industries

Telecoms

To connect each customer with the latest data applications while ensuring better experience.

Cloud

To enable future application and immersive content by bringing computer & storage capabilities to the edge

Citizen Networks

To empower every citizen with high quality primary connectivity.

Data Centers

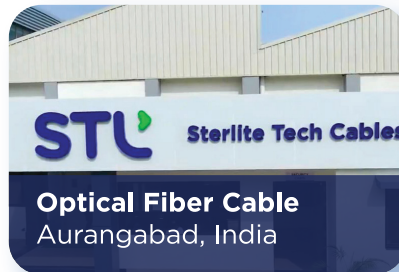
Unlocking Terabit-Scale Connectivity for the AI Data Center

* No. of patented granted and applied, for continued operations

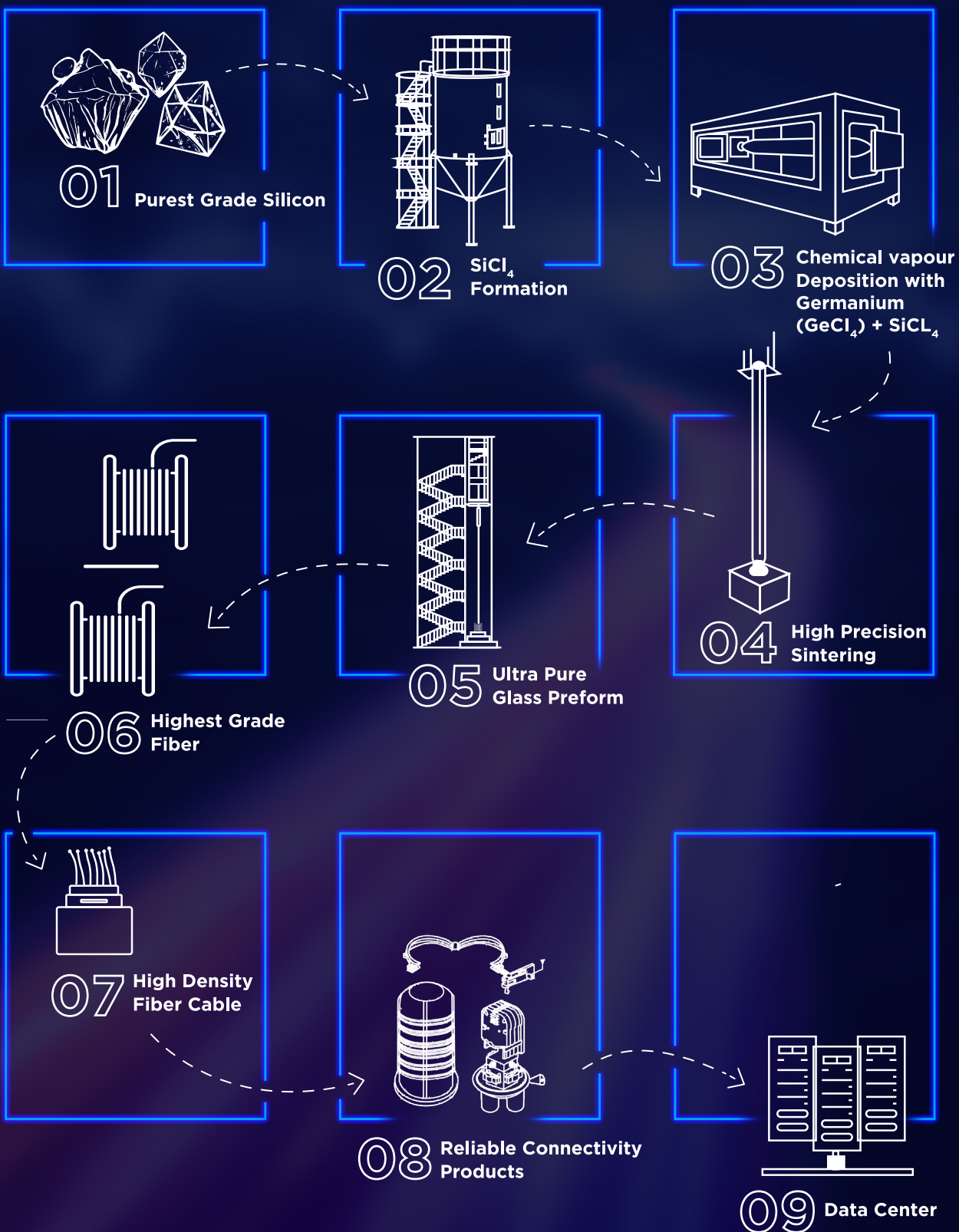


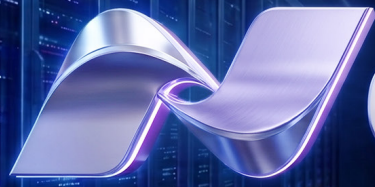
Global Manufacturing Operations

STL is a global leader in advanced connectivity solutions, providing end-to-end solutions for building AI-ready infrastructure, FTTx, Rural, Enterprise and Data Center networks. With manufacturing facilities in North America, Europe and Asia, we deliver our solutions in more than 100 countries. Data Center & Cloud companies, Telecom operators, Internet service providers and Large enterprises collaborate with STL to build their future-ready digital infrastructure. STL's business goals are driven by customer-centricity, R&D and sustainability.



We Make Our Own Glass





neuralis
by STL

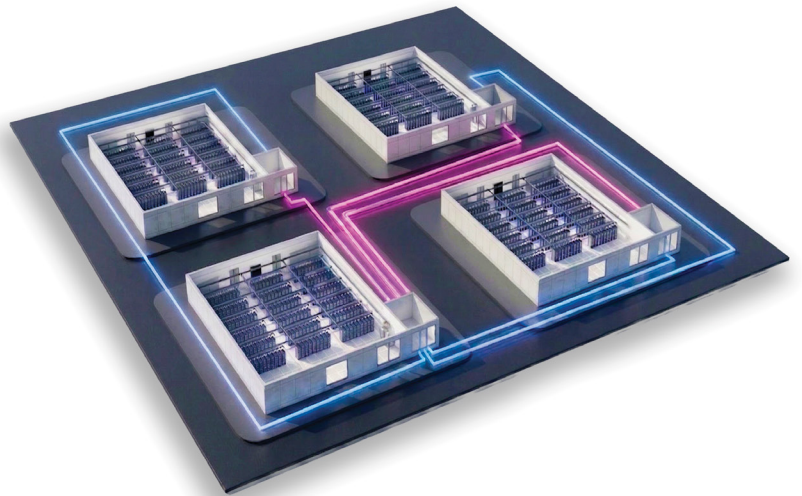
Backbone of Intelligence

In this era of Artificial Intelligence, the nature of the AI workload processing has fundamentally changed the architecture of Data Center infrastructure. **With Neuralis**, STL goes beyond manufacturing - we partner with our customers to research, design and develop high-speed & scalable passive infrastructure. We are the engineers of the neural fabric needed for Artificial Intelligence.

Data Center Interconnect

Data Center Interconnect (DCI) is the high-speed optical backbone that links data center buildings to one another - enabling the seamless, low-latency flow of data across campuses, metros, and regions that modern cloud and AI workloads demand.

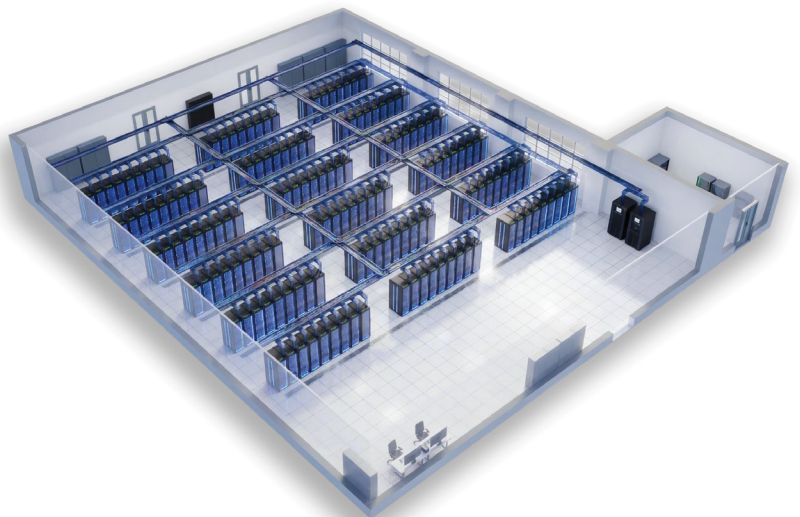
STL brings DCI expertise helping operators build interconnect infrastructure that **scales efficiently, meets the strictest global standards**, and keeps **pace with the accelerating demands of AI-era data centers**.



Data Center Whitespace

Data Center Whitespace refers to the purpose-built space with a data center facility where critical IT infrastructure - relating to compute, storage, and networking is deployed alongside the power and cooling systems that sustain it.

STL enables organisations to maximise whitespace utilisation, **reduce operational complexity**, and build data center environments that **scale seamlessly** as business demands evolve.



AI DC Whitespace

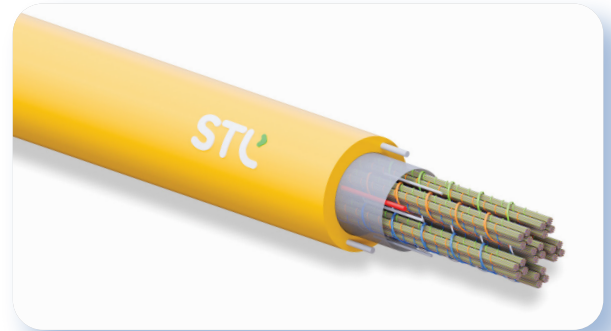
Pre Terminated Fiber trunks & Assemblies



Pre-Terminated Fiber Trunk and Cables

Factory assembled and tested MTP/MPO (Base 8/16) trunk cables built for the AI data center backbone networks. Day-one ready for rapid deployment with no field termination risk. Designed to cater for multiple future network upgrades.

- Singlemode and Multimode
- MTP, MPO, MMC16, and MMC24
- Fiber counts up to 6912F



Celesta IBR Cables

Ultra-high-density backbone cable built with Intermittently Bonded Ribbon (IBR) technology. Engineered to carry the ultra high fiber counts AI infrastructure demands.

- Fiber count: 144F to 6912F
- Fiber G.657.A2 bend-insensitive SMF
- 200µm fiber for ultra-high-density



Fiber Array Cords & Assemblies

Precision-engineered for 800G/1.6T AI data center environments, where fiber geometry and length consistency are critical to maintaining optical link budgets and eliminating packet loss.

- Available as Array Cords and Harnesses
- LC Unibody and LC Duplex Zipcord options
- Base 8/16 MTP/MPO
- MTP, MPO, MMC16, and MMC24

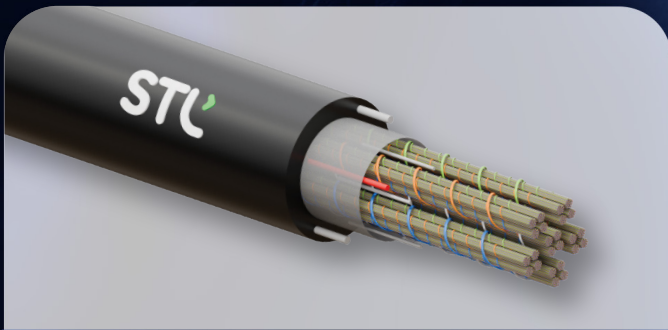


Fiber Enclosures & Panels

A full range of ultra-high and high-density fiber enclosures engineered to maximise rack density and simplify fiber management in AI data center environments.

- UHD, HD, and Pass-Thru panels
- MMC/MPO panel configurations

AI DC Interconnect Cables and Splicing



Celesta IBR indoor/Outdoor duct cable

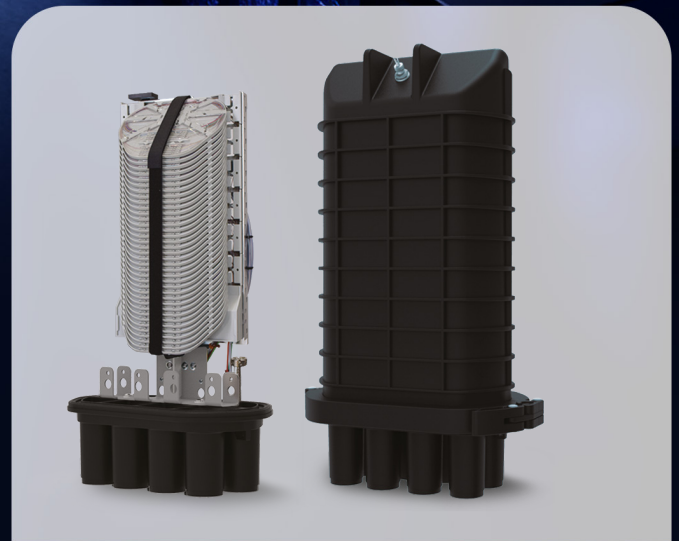
High-density cable bringing IBR ribbon architecture and mass fusion splicing efficiency to controlled building environments. Optimised for equipment rooms and cabinets and other data center applications.

- Colour-coded bonded ribbons for rapid identification
- Engineered for mid-span access
- Fiber G.657.A2 bend-insensitive SMF fiber Is a HD A2 200µm fiber

Celesta IBR outdoor duct cable

Ultra-high-density OSP cable used in ducts. STL combines it's intermittently bonded ribbon technology with mass fusion splicing productivity.

- Supports both blowing/jetting and pulling deployment
- Gel-free dry water-blocking and aramid-reinforced strength members
- Fiber G.657.A2 bend-insensitive SMF



OSP cabinets & high-density closures

The gateway between outside connectivity and internal AI whitespace. Leveraging our outside plant expertise, STL engineered solutions for rapid fiber entrance and secure termination before data reaches the GPU clusters.

- Fiber Entrance Splice Cabinets (FEC),
- Outside Plant Cabinets
- Joint Closures



beyond tomorrow

About STL

Founded in 1988, Sterlite Technologies (STL) is a leading global manufacturer that is vertically integrated to produce raw optical fiber and a complete range of fiber cables up to 6,912 using IBR rollable ribbon fibers. STL has a large global manufacturing footprint across India, China, Europe and USA. STL provides solutions for Data Center Interconnect (DCI) and a full range of AI-ready MMC & MTP fiber cabling solutions to hyperscalers, large cloud companies, Neoclouds and large enterprise companies. STL's business goals are driven by customer-centricity, R&D and sustainability.

For additional information please contact your sales representative.

You can also visit our website at www.stl.tech

The information given herein, including drawings, illustrations and schematics are intended for illustration purposes only and is believed to be reliable. However, STL makes no warranties to its accuracy or completeness and disclaims any liability in connection with its use. STL obligations shall be only set forth in STL standard terms and conditions of the sale and in no case, STL be liable for any incidental, indirect or consequential damages arising out of sale, resale, use or misuse of the product. Users of STL products should make their own evaluation to determine the suitability of such each product for the specific application.