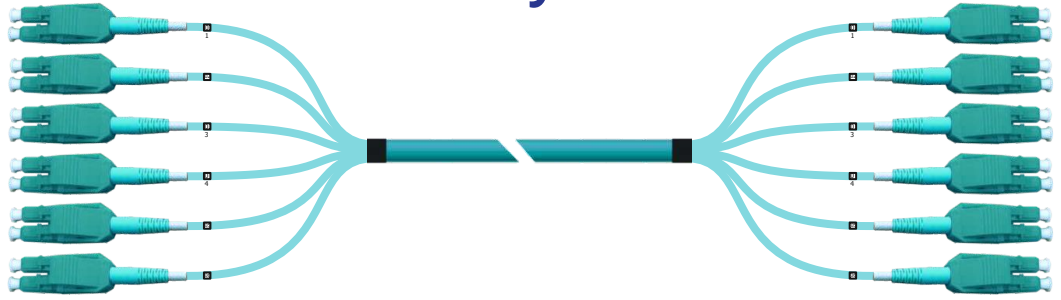


LC Trunk Cable Assembly

12F



Product Specification

Fibre Type	SM - G.657.A1 Bend Insensitive MM - OM3/ OM4 / OM5
Capacity	12F
Inner Jacket Cable Diameter (mm)	2
Jacket Colour	SM - Yellow MM OM3/OM4 - Aqua MM OM5 - Lime Green
Length Tolerance	Length up to 10m-L-0/+0.20Mtr and 10m-L+2%L/-0 Mtr
Break-outs Length (L1 & L2)	1m; -0/+0.10
Outer Jacket Material	LSZH
LC Connector Colour	SM - Blue MM OM3/OM4 - Aqua MM OM5 - Lime Green
Operating Temperature	-20°C to +70°C

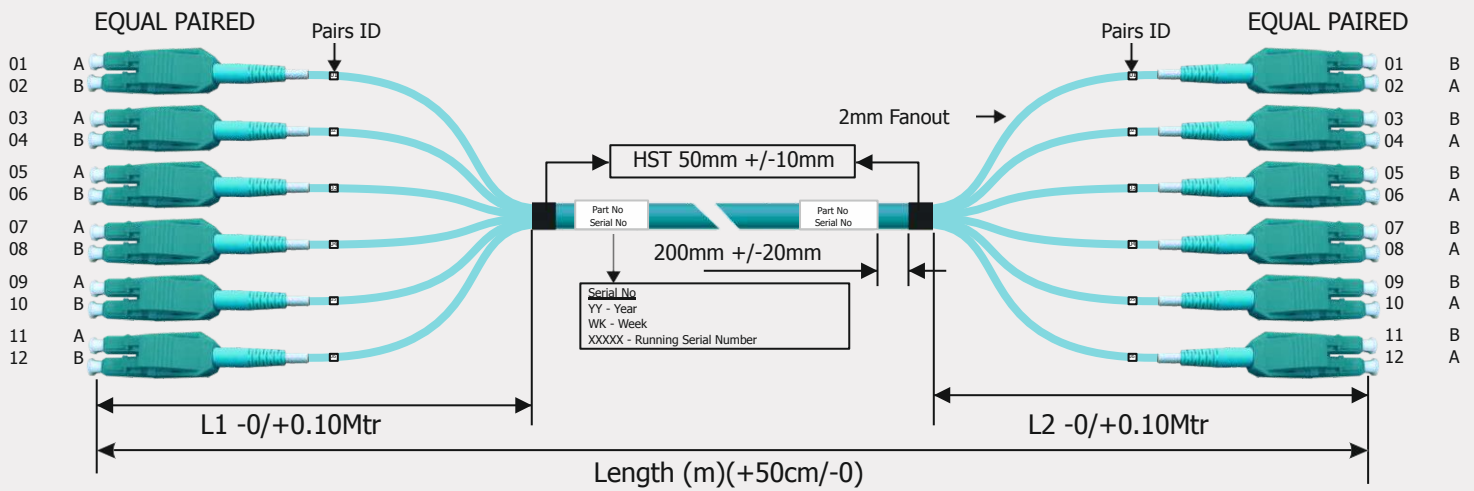
Optical Specifications

LC Trunk Cable Assemblies		SM IL (dB)	SM RL(dB)	MM IL(dB)	MM RL(dB)
Connector	Loss	@1310/1550nm	@1310/1550nm	@850/1300nm	@850/1300nm
LC PC/UPC	Low Loss	≤ 0.25	≥ 55dB	≤ 0.25	≥ 30dB
	Ultra Low Loss	≤ 0.20	≥ 55dB	≤ 0.20	≥ 30dB
LC APC	Low Loss	≤ 0.25	≥ 60dB	NA	NA
	Ultra Low Loss	≤ 0.20	≥ 60dB	NA	NA

Testing Standards

End Face Characteristics	As per IEC 61300-3-35
Optical performance	Insertion loss (IL): as per IEC 61300-3-4 Return loss (RL): as per IEC 61300-3-6

Dimensions



Part Number Configurator

Product Type	Cable Type	Fibre Type	Fibre Count	Jacket Type	End Connector 1	End Connector 2	Loss	Length UoM	Length	Special Character
U	D	4	B	L	3	3	L	M	001	000

Product Type	Fibre Type	Fibre Count	Jacket Type	End Connector-1	End Connector-2	Length UoM
U Uniboot patch cord	9 SM G657A1	B 12F	L LSZH	End Connector-1 2 LC, SM, UPC 3 LC, OM3/OM4 4 LC, OM5	End Connector-2 2 LC, SM, UPC 3 LC, OM3/OM4 4 LC, OM5 U Terminated	Length UoM F Feet M Metres L 001 to 999
	3 OM3, BIMMF					
	4 OM4, BIMMF					
	5 OM5, BIMMF					
D Indoor Small Diameter Trunk Cable					Loss L Low Loss U Ultra Low Loss	Special Character 000 No Customization

For additional information please contact your sales representative.

You can also visit our website at www.stl.tech

The information given herein, including drawings, illustrations and schematics are intended for illustration purposes only and is believed to be reliable. However, STL makes no warranties to its accuracy or completeness and disclaims any liability in connection with its use. STL obligations shall be only set forth in STL standard terms and conditions of the sale and in no case, STL be liable for any incidental, indirect or consequential damages arising out of sale, resale, use or misuse of the product. Users of STL products should make their own evaluation to determine the suitability of such each product for the specific application.