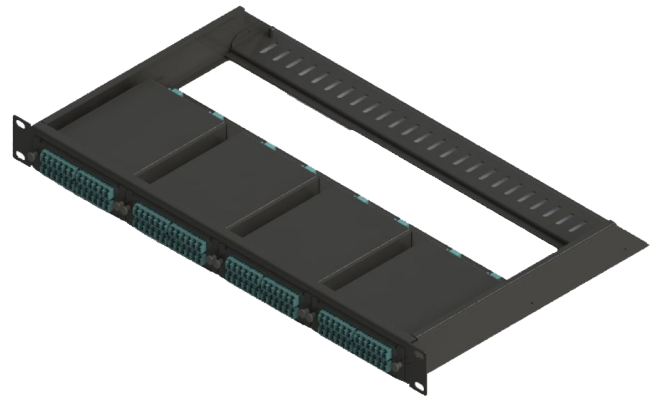
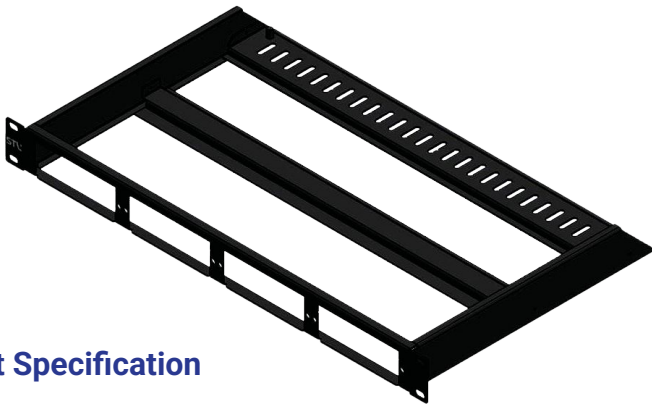


1RU Panel for MPO Cassette



Product Specification

STL 1RU panel is a custom designed panel for MPO Cassettes. Made of CRCA steel sheet with black powder coating, is very sturdy and provides long service life. Flat 1RU panel with 19 inch width is best suited for mounting inside the equipment racks. The rear cable support bar with slots for Velcro tie is the ideal solution to support and secure the connecting cable loop without any entangle with other adjacent cables.

Features & Benefits

- Made of CRCA Steel Sheet
- Perfect fit for 4 nos. of MPO Cassettes
- Integrated cable support bar to support the cable loop
- Provision of securing the cable loop using Velcro ties

Physical Characteristics

Height	1 RU
Width	19 inch
Colour	Black
Weight	1.1 Kg (approx.)

Environmental Characteristics

ROHS compliant

Packing Details

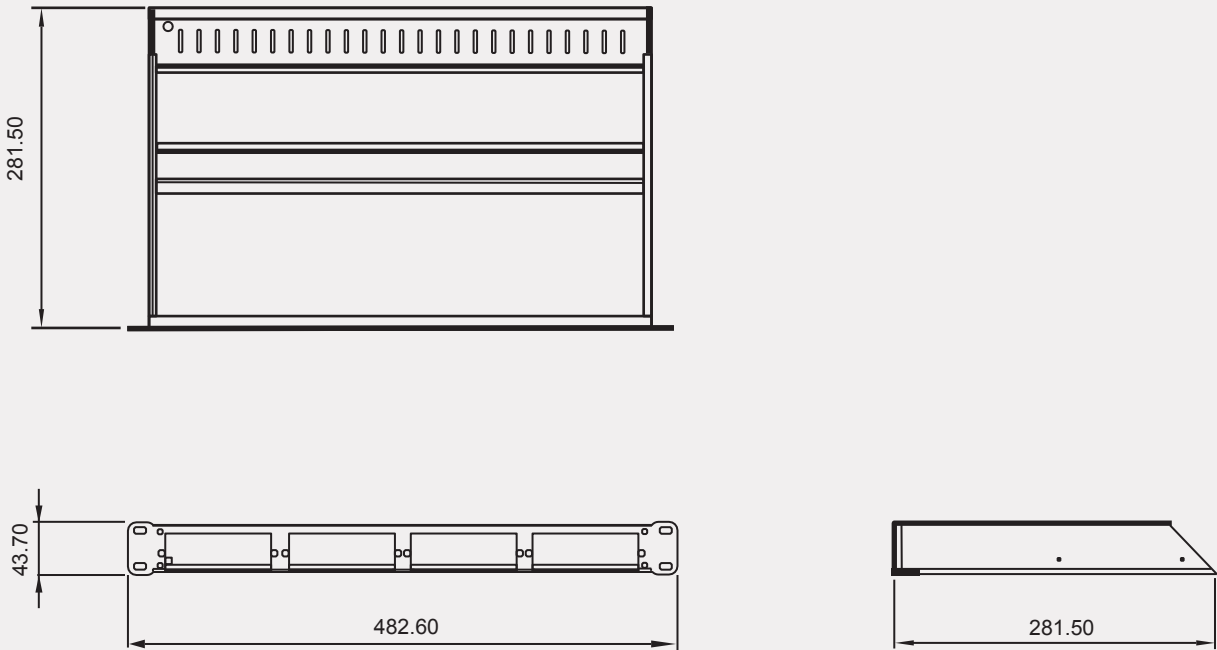
Supplied in corrugated packing box with identification label.

Part Number

Part Number	Description
FMR0AL01D1U	19-inch rack mountable, 1RU HD patch panel, holds 4 cassettes

Dimensions

All dimensions in mm.



For additional information please contact your sales representative.

You can also visit our website at www.stl.tech

The information given herein, including drawings, illustrations and schematics are intended for illustration purposes only and is believed to be reliable. However, STL makes no warranties to its accuracy or completeness and disclaims any liability in connection with its use. STL obligations shall be only set forth in STL standard terms and conditions of the sale and in no case, STL be liable for any incidental, indirect or consequential damages arising out of sale, resale, use or misuse of the product. Users of STL products should make their own evaluation to determine the suitability of such each product for the specific application.