

Copper Connectivity

System Catalogue

estelan

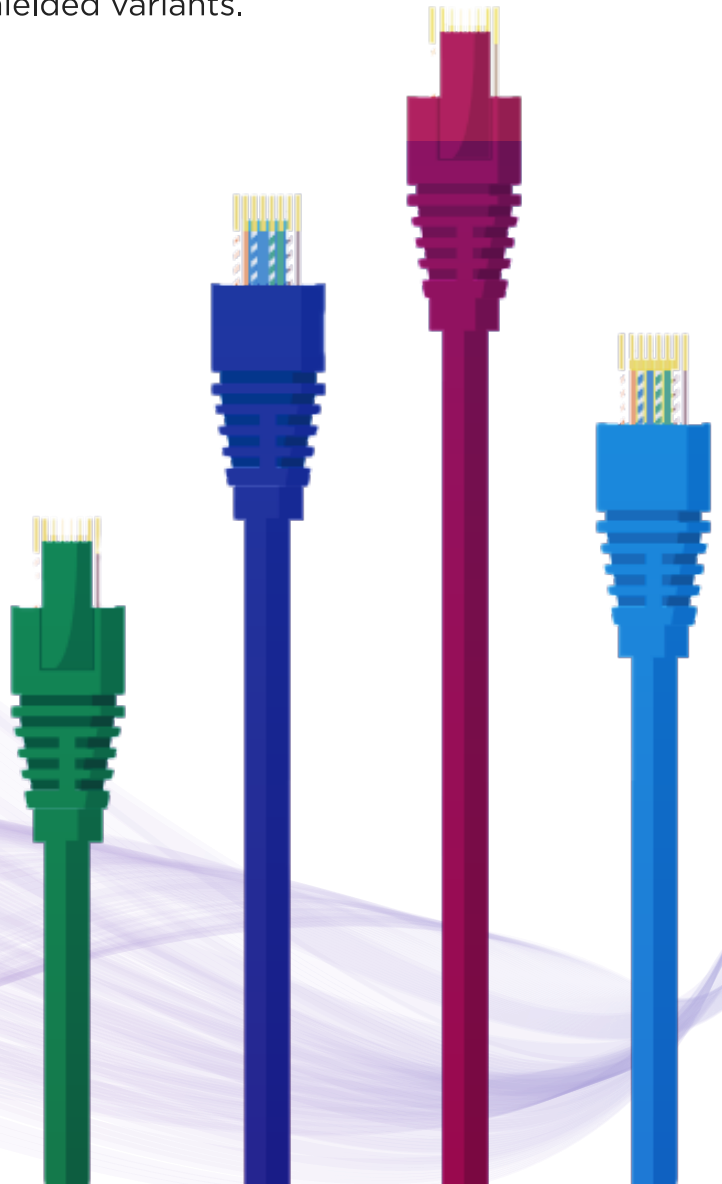
Copper Connectivity System

STL Estelan Copper LAN cabling system is an end-to-end solution comprising of cables, patch cords and connectivity that meets and exceeds the industry standards for cabling as well as application delivery requirements.

Designed for use in converged building networks as well as in data centres, **STL Estelan** copper cabling systems meet and exceed the requirements specified by the latest revisions of ANSI/TIA 568 as well as ISO 11801 standards for both permanent link as well as channel performance. Jacks, patch cords, and cable are component compliant.

Manufactured in ISO 9001 certified manufacturing facilities **STL Estelan** copper cabling systems assure high quality and reliability and are backed by a 25-year performance warranty.

STL Estelan Copper Cabling Systems are available in Cat6 as well as Cat6A performance categories in Unshielded and Shielded variants.



Copper Cabling System - Unshielded

Cat6 U/UTP Cabling Systems

Cable



Part Number

Description

22127-0104

Cat6 U/UTP Cable, 23 AWG, LSZH, Grey Colour, 305m Reel-in-Box, Eca

Part Number

Description

NXIOC06UX180WH Cat6 UTP Jack Module, 180° cable exit, White

NXIOC06UX180BK Cat6 UTP Jack Module, 180° cable exit, Black

NXIOC06UX090WH Cat6 UTP Jack Module, 90° cable exit, White

NXIOC06UX090BK Cat6A UTP Jack Module, 90° cable exit, Black

NXFP01BSIV Faceplate, 1-Port, British Style 86mm X 86mm Ivory

NXFP02BSIV Faceplate, 2-Port, British Style 86mm X 86mm Ivory

NXFP04BSIV Faceplate, 4-Port, British Style 86mm X 86mm Ivory

NXGBBSWH Backbox for British style faceplate, White

NXFP01USIV Faceplate, 1-Port Single gang - 70mm X 114mm Ivory

NXFP02USIV Faceplate, 2-Port Single gang - 70mm X 114mm Ivory

ZXPPUSSTRE1U24 Patch Panel, Straight 1RU 24 Port Unloaded, UTP/STP with Cable Support Bar

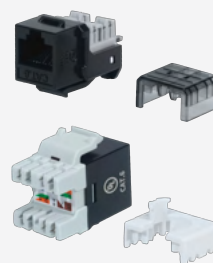
ZXPPUSSTRF1U24 Patch Panel, Straight 1RU 24 Port Unloaded, UTP/STP w/o Cable Support Bar

ZXCSSTR1U Cable Support Bar

NXPPUXSTRE1U48 Patch Panel, Straight 1RU 48 Port Unloaded UTP with Cable Support Bar

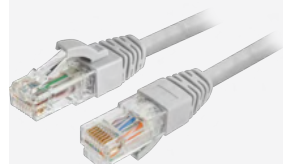
NXPPUXSTRE2U48 Patch Panel, Straight 2RU 48 Port Unloaded UTP with Cable Support Bar

Connectivity¹



Note: ¹ Jack Module available in other colours on request. MoQ conditions may apply

Patch Cord²



Part Number	Description
ZXPCC06UX24GY01	Patch Cord, Cat6 U/UTP, 24 AWG, LSZH, Grey, 1M
ZXPCC06UX24GY02	Patch Cord, Cat6 U/UTP, 24 AWG, LSZH, Grey, 2M
ZXPCC06UX24GY03	Patch Cord, Cat6 U/UTP, 24 AWG, LSZH, Grey, 3M
ZXPCC06UX24GY05	Patch Cord, Cat6 U/UTP, 24 AWG, LSZH, Grey, 5M

Note: ² Other colours and lengths available on request. MoQ conditions may apply

RJ45 Field Termination Plug



Part Number	Description
NXMPC06UXS2	RJ45 CAT6 Modular Plug Unshielded Solid 23-24AWG

Part Number

Description

NXFTC06UXS4	RJ45 CAT6 MPTL Connector Unshielded Solid 22-27AWG
-------------	--

MPTL Connector



Cat6A U/UTP Cabling Systems

Cable



Part Number

Description

32127-0104

Cat6A U/UTP Cable, 23 AWG, LSZH, Grey colour, 305m, Reel, Eca

Part Number

Description

NXIOC6AUX180WH

Cat6A UTP Jack Module, Tool less termination, 180° cable exit, White

NXIOC6AUX180BK

Cat6A UTP Jack Module, Tool less termination, 180° cable exit, Black

NXIOC6AUX090WH

Cat6A UTP Jack Module, 90° cable exit, White

NXIOC6AUX090BK

Cat6A UTP Jack Module, 90° cable exit, Black

NXFP01BSIV

Faceplate, 1-Port, British Style 86mm X 86mm Ivory

NXFP02BSIV

Faceplate, 2-Port, British Style 86mm X 86mm Ivory

NXFP04BSIV

Faceplate, 4-Port, British Style 86mm X 86mm Ivory

NXGBBSWH

Backbox for British style faceplate, White

NXFP01USIV

Faceplate, 1-Port Single gang - 70mm X 114mm Ivory

NXFP02USIV

Faceplate, 2-Port Single gang - 70mm X 114mm Ivory

ZXPPUSSTRE1U24

Patch Panel, Straight 1RU 24 Port Unloaded, UTP/STP with Cable Support Bar

ZXPPUSSTRF1U24

Patch Panel, Straight 1RU 24 Port Unloaded, UTP/STP w/o Cable Support Bar

ZXCSSTR1U

Cable Support Bar

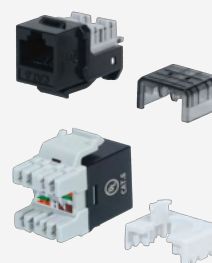
NXPPUXSTRE1U48

Patch Panel, Straight 1RU 48 Port Unloaded UTP with Cable Support Bar

NXPPUXSTRE2U48

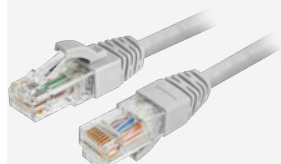
Patch Panel, Straight 2RU 48 Port Unloaded UTP with Cable Support Bar

Connectivity¹



Note: ¹ Jack Module available in other colours on request. MoQ conditions may apply

Patch Cord²



Part Number	Description
ZXPCC6AUX24GY01	Patch Cord, Cat6A U/UTP, 24 AWG, LSZH, Grey, 1M
ZXPCC6AUX24GY02	Patch Cord, Cat6A U/UTP, 24 AWG, LSZH, Grey, 2M
ZXPCC6AUX24GY03	Patch Cord, Cat6A U/UTP, 24 AWG, LSZH, Grey, 3M
ZXPCC6AUX24GY05	Patch Cord, Cat6A U/UTP, 24 AWG, LSZH, Grey, 5M

Note: ² Other colours and lengths available on request. MoQ conditions may apply

Part Number

Description

NXFTC6AUXS4	RJ45 CAT6A MPTL Connector Unshielded Solid 22-27AWG
-------------	---

MPTL Connector



Copper Cabling System - Shielded

Cat6 S/FTP Cabling Systems

Cable



Part Number

Description

22627-0104

Cat6 S/FTP Cable, 23 AWG, LSZH, Grey Colour, 305m, Eca

Part Number

Description

NXIOC06SX180GY

Cat6 STP Jack Module, Tool less termination, 180° cable exit, Grey

NXIOC06SX090GY

Cat6 STP Jack Module, 90° cable exit, Grey

NXFP01BSIV

Faceplate, 1-Port, British Style 86mm X 86mm Ivory

NXFP02BSIV

Faceplate, 2-Port, British Style 86mm X 86mm Ivory

NXFP04BSIV

Faceplate, 4-Port, British Style 86mm X 86mm Ivory

NXGBBSWH

Backbox for British style faceplate, White

NXFP01USIV

Faceplate, 1-Port Single gang - 70mm X 114mm Ivory

NXFP02USIV

Faceplate, 2-Port Single gang - 70mm X 114mm Ivory

ZXPPUSSTRE1U24

Patch Panel, Straight 1RU 24 Port Unloaded, UTP/STP with Cable Support Bar

ZXPPUSSTRF1U24

Patch Panel, Straight 1RU 24 Port Unloaded, UTP/STP w/o Cable Support Bar

ZXCSSTR1U

Cable Support Bar

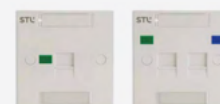
NXPPSXSTRE1U48

Patch Panel, Straight 1RU 48 Port Unloaded STP with Cable Support Bar

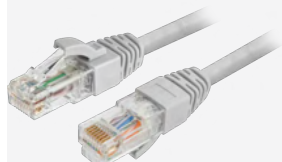
NXPPSXSTRE2U48

Patch Panel, Straight 2RU 48 Port Unloaded STP with Cable Support Bar

Connectivity



Patch Cord²



Part Number	Description
ZXPCC06SXZ26GY01	Patch Cord, Cat6 S/FTP, 26 AWG, LSZH, Grey, 1M
ZXPCC06SXZ26GY02	Patch Cord, Cat6 S/FTP, 26 AWG, LSZH, Grey, 2M
ZXPCC06SXZ26GY03	Patch Cord, Cat6 S/FTP, 26 AWG, LSZH, Grey, 3M
ZXPCC06SXZ26GY05	Patch Cord, Cat6 S/FTP, 26 AWG, LSZH, Grey, 5M

Note: ² Other colours and lengths available on request. MoQ conditions may apply

Part Number

Description

NXFTC06SXS4

RJ45 CAT6 MPTL Connector Shielded Solid 22-27AWG

MPTL Connector



Cat6A S/FTP Cabling Systems

Cable



Part Number

Description

32627-0104

Cat6A Eca S/FTP LSZH 305m 23 AWG Grey Reel

Part Number

Description

NXIOC6ASX180GY

Cat6A STP Jack Module, Tool less termination, 180° cable exit, Grey

NXIOC6ASX090GY

Cat6A STP Jack Module, 90° cable exit, Grey

NXFP01BSIV

Faceplate, 1-Port, British Style 86mm X 86mm Ivory

NXFP02BSIV

Faceplate, 2-Port, British Style 86mm X 86mm Ivory

NXFP04BSIV

Faceplate, 4-Port, British Style 86mm X 86mm Ivory

NXGBBSWH

Backbox for British style faceplate, White

NXFP01USIV

Faceplate, 1-Port Single gang - 70mm X 114mm Ivory

NXFP02USIV

Faceplate, 2-Port Single gang - 70mm X 114mm Ivory

ZXPPUSSTRE1U24

Patch Panel, Straight 1RU 24 Port Unloaded, UTP/STP with Cable Support Bar

ZXPPUSSTRF1U24

Patch Panel, Straight 1RU 24 Port Unloaded, UTP/STP w/o Cable Support Bar

ZXCSSTR1U

Cable Support Bar

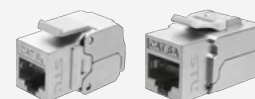
NXPPSXSTRE1U48

Patch Panel, Straight 1RU 48 Port Unloaded STP with Cable Support Bar

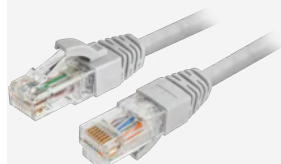
NXPPSXSTRE2U48

Patch Panel, Straight 2RU 48 Port Unloaded STP with Cable Support Bar

Connectivity



Patch Cord²



Part Number	Description
ZXPCC6ASXZ26GY01	Patch Cord, Cat6A S/FTP, 26 AWG, LSZH, Grey, 1M
ZXPCC6ASXZ26GY02	Patch Cord, Cat6A S/FTP, 26 AWG, LSZH, Grey, 2M
ZXPCC6ASXZ26GY03	Patch Cord, Cat6A S/FTP, 26 AWG, LSZH, Grey, 3M
ZXPCC6ASXZ26GY05	Patch Cord, Cat6A S/FTP, 26 AWG, LSZH, Grey, 5M

Note: ² Other colours and lengths available on request. MoQ conditions may apply

Part Number

Description

NXFTC6ASXS4

RJ45 CAT6A MPTL Connector Shielded Solid 22-27AWG

MPTL Connector





About STL - Sterlite Technologies Ltd

A leading optical and digital solutions company

STL is a leading global optical and digital solutions company providing advanced offerings to build 5G, Rural, FTTx, Enterprise and Data Centre networks. The company, driven by its purpose of 'Transforming Billions of Lives by Connecting the World', designs and manufactures in 4 continents with customers in more than 100 countries. Telecom operators, cloud companies, citizen networks, and large enterprises recognize and rely on STL for advanced capabilities in Optical Connectivity, Global Services, and Digital and Technology solutions to build ubiquitous and future-ready digital networks. STL's business goals are driven by customer-centricity, R&D and sustainability. Championing sustainable manufacturing, the company has committed to achieve Net Zero emissions by 2030. With top talent from 30+ nationalities, STL has earned numerous 'Great Place to Work' awards and been voted as the 'Best Organisation for Women'.

STL has a strong global presence in India, Italy, the UK, the USA, China and Brazil.

01/062025/IN

stl.tech