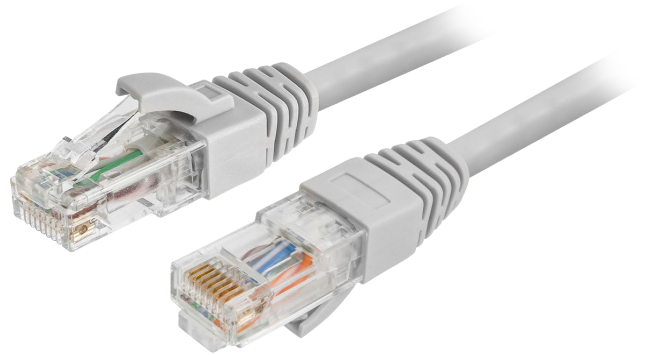


estelan

Category 6A U/UTP Patch Cord



High Speed 10 Gigabit U/UTP Patch Cable LSZH, Category 6A delivers optimal transmission and networking performance with reduced insertion loss and Alien Crosstalk. These are high-performance components available in a variety of lengths and colors, designed to meet or exceed Cat6A specifications. 24 AWG conductors are securely crimped with RJ45 plug to deliver superior performance.

Features & Benefits

- 24 AWG Stranded flexible cable
- High performance RJ-45 Connectors with 50µm Gold Plated contacts
- Flexible Strain Relief Boot
- Soft latch-cover design for ease of handling
- Complies to ANSI/TIA-568 latest revision and other Equivalent standards

Regulatory Compliances/Certifications

- RoHS Directive (2011/65/EU+2015/863/EU)

Specifications

Mechanical Specifications	
Conductor AWG	24
Conductor Material	Stranded Bare Copper
Type of Cable	U/UTP
Number of Pairs	4
Application	Indoor
Insulation Diameter (mm)	1.05 (Nominal)
Insulation Material	PE
Jacket Type	LSZH
Cable Diameter (mm)	6.1 (Nominal)

Environmental Specifications	
Installation Temperature	0°C to 50°C
Storage Temperature	-20°C to +70°C
Operating Temperature	-10°C to +60°C

Part Number Configurator

Product Code	Product Type	Category	Shielding	Outer Sheath	Conductor Size	Colour	Length
ZX	PC	C6A	UX	Z	24	GY	03

Part Code	Description
ZXPCC6AUXZ24GY03	Category 6A High Speed 10 Gigabit 24 AWG U/UTP Patch Cord, LSZH, Grey, 3 Meters

Product Code	Product Type	Category	Shielding	Outer Sheath ¹	Conductor Size	Length
<div>ZX</div>	<div>PC</div> <div>Patch Cord</div>	<div>C6A</div> <div>CAT6A</div>	<div>UX</div> <div>Unshielded</div>	<div>Z</div> <div>LSZH</div>	<div>24</div> <div>24 AWG</div>	<div>X5</div> <div>0.5 m</div>
					<div>Colour</div>	<div>01</div> <div>1 m</div>
					<div>BL</div> <div>Blue</div>	<div>20</div> <div>20 m</div>
					<div>OR</div> <div>Orange</div>	
					<div>GR</div> <div>Green</div>	
					<div>GY</div> <div>Grey</div>	
					<div>WH</div> <div>White</div>	
					<div>RD</div> <div>Red</div>	
					<div>BK</div> <div>Black</div>	
					<div>YL</div> <div>Yellow</div>	

Note 1: Other options available on request

For additional information please contact your sales representative.

You can also visit our website at www.stl.tech

The information given herein, including drawings, illustrations and schematics are intended for illustration purposes only and is believed to be reliable. However, STL makes no warranties to its accuracy or completeness and disclaims any liability in connection with its use. STL obligations shall be only set forth in STL standard terms and conditions of the sale and in no case, STL be liable for any incidental, indirect or consequential damages arising out of sale, resale, use or misuse of the product. Users of STL products should make their own evaluation to determine the suitability of such each product for the specific application.