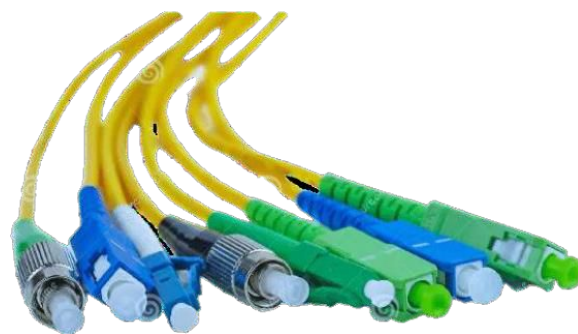


estelan

Fibre Patch cords and Pigtails



Product Details

STL high performance optical patch cords and pigtails are best suited for establishing optical connectivity between various elements of the network. Manufactured with high precision optical connectors with assembly and testing done in a state of art manufacturing facility, these patch cords meet international standard compliance and ensure reliable connectivity.

With Low smoke zero halogen (LSZH) outer sheath, these patch cords and pigtails are most suited for indoor application.

Features & Benefits

- High precision connectors with Zirconia (ceramic) ferrule
- Patch cords with various connector combinations with UPC and APC polishing
- Easy patching and connection management
- LSZH outer sheath suitable for indoor application complies to IEC 60332-1

Environmental Characteristics

- Operating Temperature: -10 °C to +60 °C
- Halogen Free
- ROHS compliant

Physical Characteristics

Fibre Type	SM: G.652D/G.657A1 MM: OM3/OM4
Fibre Count	Pigtail: 1F Duplex patch cord: 2F
Jacket Material	LSZH
Jacket Colour	Pigtail: SM -White, MM OM3/OM4 - Aqua Patch cord: SM - Yellow, MM OM3/OM4 - Aqua
Jacket Dia (typical)	Pigtail: 0.9mm (900µm) Duplex Patch Cord: 1.8mm zip cord
Connector Types	LC/UPC, SC/UPC, LC/APC, SC/APC
Connector Colour	LC/UPC: SM – Blue, MM OM3/OM4 – Beige LC/APC: Green SC/UPC: SM – Blue, MM OM3/OM4 – Beige SC/APC: Green

Mechanical Properties

Repeatability	≤0.2dB up to 700 mating cycles
Jacket Dia (typical)	Pigtail: 0.9mm (900µm) Duplex Patch Cord: 1.8mm zip cord
Bending radius min.	Static: 10 x cable OD Dynamic: 20 x cable OD
Tensile load	0.9mm Pigtail - 5N Duplex Patch cord – 50N max. per connector as per IEC 61300-2-4, IEC 61753-1, GR-326-CORE issue 4
Cable crush resistance	0.9mm Pigtail – NA Duplex Patch cord cable - Short term:500N/100mm: Long term: 100N/100mm

Testing Standards

End Face Characteristics	As per IEC 61300-3-35
Optical performance	Insertion loss (IL): as per IEC 61300-3-4 Return loss (BR/RL): as per IEC 61300-3-6

Optical Test Limits

Fibre Type	Insertion Loss (IL)	Return Loss (RL)	Wavelength (nm)
SM - UPC	≤0.3dB	≥ 55dB	1310nm/1550nm
SM- APC	≤0.3dB	≥ 60dB	1310nm/1550nm
MM - UPC	≤0.3dB	≥ 25dB	850nm/1300nm

Ordering information

Part code	Description
EPT509B091WHL1X5	FO Pigtail LC/UPC SM G652D 0.9mm LSZH WH 1.5M
EPP5509D182YLL001	FO Patch cord LC/UPC to LC/UPC Duplex 1.8mm SM G652D LSZH 1M

Part Number Configurator

Product Type	Connector A	Connector B	Fibre Type	Cable Type	Cable Size	Fibre Count	Colour	Jacket Type	Length
EPT	5	5	09	D	18	2	YL	L	003

Product Type		Connector A		Connector B		Fibre Type		Cable Type		Fibre Count		Jacket Type	
EPT	Pigtail	2	SC/UPC	2	SC/UPC	09	G.652.D	D	Duplex	1	1F	L	LSZH
EPP	Patch Cord	3	SC/APC	3	SC/APC	A1	G.657.A1	B	Buffer	2	2F	Length	
		5	LC/UPC	5	LC/UPC	03	MM - OM3	Cable Size		Colour		X05	0.5 m
		6	LC/APC	6	LC/APC	04	MM - OM4	18	1.8mm	WH	White	1X5	1.5 m
								09	0.9mm	YL	Yellow	001	1 m
										AQ	Aqua	010	10 m
												100	100 m

For additional information please contact your sales representative.

You can also visit our website at www.stl.tech

The information given herein, including drawings, illustrations and schematics are intended for illustration purposes only and is believed to be reliable. However, STL makes no warranties to its accuracy or completeness and disclaims any liability in connection with its use. STL obligations shall be only set forth in STL standard terms and conditions of the sale and in no case, STL be liable for any incidental, indirect or consequential damages arising out of sale, resale, use or misuse of the product. Users of STL products should make their own evaluation to determine the suitability of such each product for the specific application.