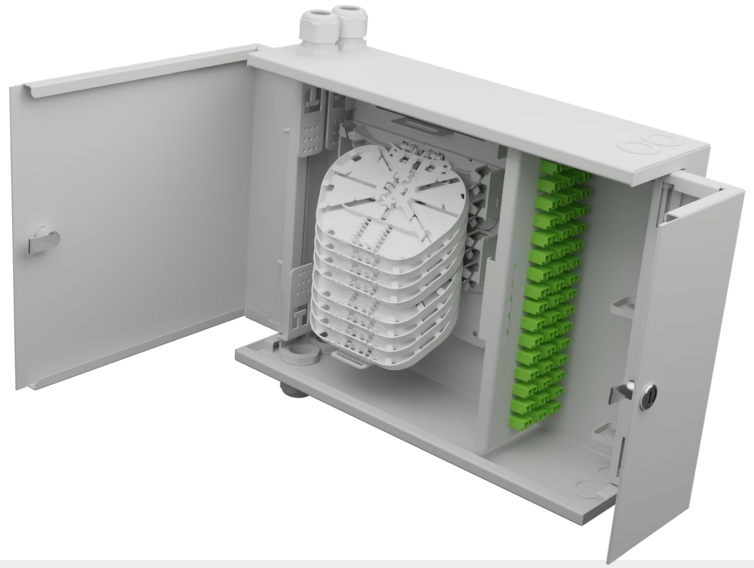


estelan

Wall Mount Box



Product Details

The STL Wall-Mount Box (WMB) is designed for high-density patching applications, offering a compact yet robust solution for managing fibre connections. Its space-efficient design and high-capacity functionality make it the perfect choice for central offices, POPs, and FTTx deployments. It ensures seamless organization and easy access to fibre optic cables in demanding environments.

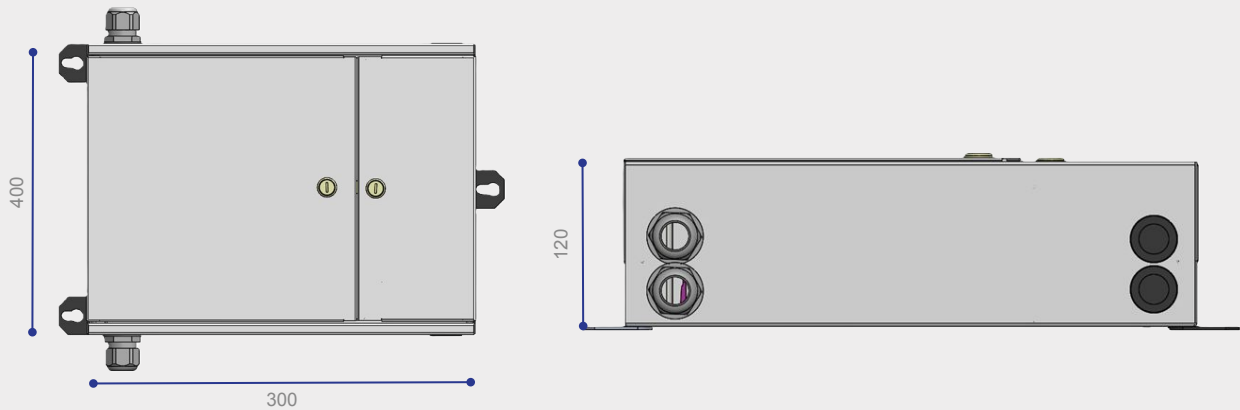
Features and Benefit

- **Cable Entry with Radius-Controlled Routing:** Provides clean cable entry for up to 4 cables (PG13) from both top and bottom, maintaining the optimal bend radius for fibre cables and ensuring superior signal integrity and network performance.
- **Patch Cord Exit:** 4 nos. (25mm) of patch cord exits (2 each at top & bottom) with rubber grommet protection for easy and secure connection to the network.
- **Connector Capacity (Max):** WMB is available with 24F SC simplex and 48F LC duplex capacity. Single mode version is with or is Blue adaptor and Multimode OM3/OM4 is with Aqua colour.
- **Cable Anchoring Provision:** Cable anchoring points keep cables firmly secured and neatly organized, preventing tangling and ensuring a professional, long-lasting setup.
- **Efficient Fiber Connection and Maintenance:** Quick and easy access to splice trays for splicing of factory-terminated pigtails ensure faster, efficient fiber routing leading to reduced installation time and easy maintenance.
- **Multiple Connector Options:** Supports a variety of connector types (LC duplex & SC Simplex), offering flexibility to choose connector types as per customer's application requirement .
- **Port Marking for Easy Identification:** Clearly marked ports, make it easy to identify individual connections, streamlining network management and reducing the risk of errors.
- **Controlled Access to Connectors:** Dual door arrangement with lock and key for secured patching. Controlled add moves and changes, making the system more secure, accessible and user-friendly.
- **Aesthetic Appearance :** The powder coated body in light grey (RAL 7035) or black (RAL 9005) colour. This ensures the system blends seamlessly into various environments, offering a professional and polished look.

Applications

- Terminating outdoor cable (OSP) in entrance facility/ MMR
- FTTH (Fibre to the Home) Deployments
- PTP (Point-to-Point) Networks
- Optical CATV Networks

Product Dimensions



All dimensions in mm

Ordering Information

Product Name	Fibre Count	Adaptor Type	Splice Tray Type	No. of Pigtails	Connection Type	Installation Kit	Fibre Type
FW	12	LPD	A	00	S	W	09

Product Name

FW	Wall Mount Box
----	----------------

Adaptor Type

SAD	SC/APC Simplex
SPC	SC/UPC Simplex
LAD	LC/APC Duplex
LPD	LC/UPC Duplex
000	No Adaptor ¹

No. of Pigtails

00	No pigtail
08	8
12	12
16	16
24	24
48	48

Connection Type

P	Patching
S	Splicing
C	Custom

Fibre Type

09	G.652.D
A1	G.657.A1
03	MM - OM3
04	MM - OM4

Fibre Count

08	8 Fibres
12	12 Fibres
16	16 Fibres
24	24 Fibres
48	48 Fibres

Splitter Tray Type

A	Splitter Tray
B	Pigtail Tray
0	No Tray

Installation Kit

W	Wall Mount
---	------------

Note 1. When No adaptor (000) is selected, please select 0 No. of Pigtails (00) and Splicing connection Type (S)

For additional information please contact your sales representative.

You can also visit our website at www.stl.tech

The information given herein, including drawings, illustrations and schematics are intended for illustration purposes only and is believed to be reliable. However, STL makes no warranties to its accuracy or completeness and disclaims any liability in connection with its use. STL obligations shall be only set forth in STL standard terms and conditions of the sale and in no case, STL be liable for any incidental, indirect or consequential damages arising out of sale, resale, use or misuse of the product. Users of STL products should make their own evaluation to determine the suitability of such each product for the specific application.