



Optical  
**Connectivity**  
Product Brochure





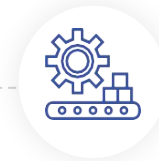
A leading optical and digital solutions company.



Research and Development  
4 Innovation Centres



Strong DNA of Innovation  
650\* Patents across the network layer  
\*As on end of FY23

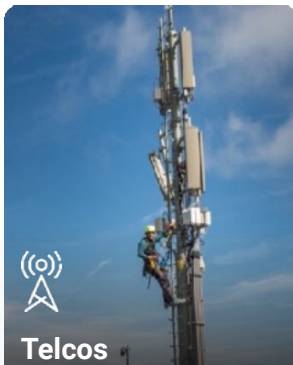



World class manufacturing facilities in India, US, Brazil & Italy



Advanced product offerings to build 5G, Rural, FTTx, Enterprise and Datacenter networks

## Creating hyper-scale Digital Infrastructure



  
**Telcos**

To connect each customer with the latest data applications while ensuring better experience.



  
**Cloud Companies**

To enable future application and immersive content by bringing computer & storage capabilities to the edge



  
**Citizen Networks**

To empower every citizen with high quality primary connectivity.



  
**Large Enterprises**

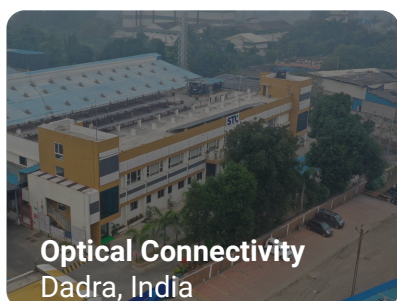
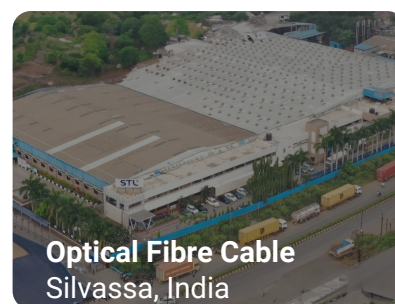
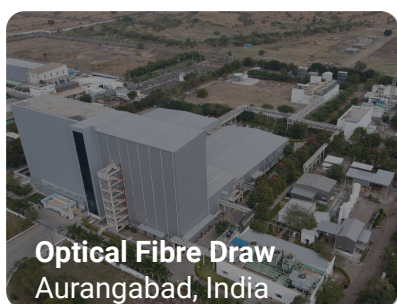
To create secure networks for the specialized enterprise use cases.



# Global Manufacturing Operations

STL is a leading global optical and digital solutions company providing advanced offerings to build 5G, Rural, FTTx, Enterprise and Datacenter networks. The company, driven by its purpose of 'Transforming Billions of Lives by Connecting the World' designs and manufactures in 4 continents with customers in more than 100 countries.

STL has a strong global presence with design and manufacturing capabilities in India, Italy, the UK, the US, China, and Brazil.





# Optical Connectivity

## Connect with Confidence

In the rapidly evolving world of FTTx networks, you need more than just individual components; you need a partner who understands the full spectrum of fibre management. STL's Optical Connectivity Solutions offer a complete approach to building and maintaining robust, future-ready networks that stand the test of time. Our solutions deliver exceptional quality, longevity, and ruggedness, ensuring that your network infrastructure remains a stable and reliable communications backbone for years to come.

We believe in offering more than just products—we provide a comprehensive set of integrated solutions that include design-through-operation services. This holistic approach makes network deployment seamless, efficient, and tailored to your specific needs. With STL, you can manage your entire fibre network with confidence, knowing that every product is Designed Around You. Our broad product range allows for one-stop shopping, simplifying your procurement process and ensuring that every element fits perfectly into your operational framework.

Our portfolio covers all aspects of fibre management. For the Central Office, we offer a wide array of products including racks, shelves, cassettes, and trays designed to manage single circuits and individual elements with precision. In the Outside Plant, our offerings include outdoor cabinets, aerial and buried joint closures, field-installable connectors, patch cords, and splice components—all designed to endure the harshest environments. We complement these with expert engineering services and training, ensuring that your network is not only well-built but also well-maintained.

At the premises end, STL provides solutions for every typical layout, from outlet terminations and small wall-mount boxes to splice fusion protection sleeves and mechanical splice devices. Our field-mountable connectors and extensive range of FBT, PLC, and patch cords ensure that your passive network solutions are complete and future-proof.

With STL Optical Connectivity Solutions, you're not just building a network; you're investing in a legacy of reliability and performance. Our solutions are **Ready for the Future, Today**, empowering you to connect with confidence, now and in the years to come.



Engineered for  
Endurance



Designed  
Around You



Ready for the  
Future, Today



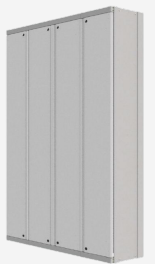
# CENTRAL OFFICE



## MAIN DISTRIBUTION FRAMES

### OXF - Optical XConnect Frame

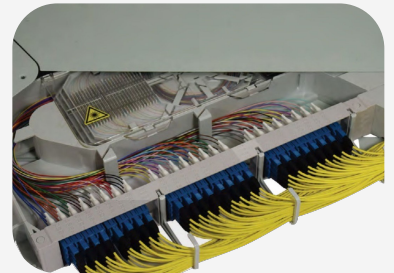
- Improved modularity: reduced bricks number
- Overall (operation, capex) cost reduction
- Improved strength and stability
- Available capacity: 45x Shelves, 1RU subrack; 22x Shelves, 2RU subrack and 15x Shelves, 3RU subrack
- Internal cross-connection (side to side and back-to-back)



## OPTICAL DISTRIBUTION PANELS

### nPTD HD - New Pivoting Tray Drawer HD

- nPTD HD is suitable for splicing and patching fibre optic cables. The rack (or case) structure of these drawers are 19" size in metallic material with removable front cover. The pivoting trays are mounted inside, right or left opening according to customer request. The NPTD HD trays can be configured in both patch and splice mixed mode.
- The subracks are light gray RAL 7035, powder-coat painted. The NPTD HD subracks can be mounted on ETSI frames by using appropriate brackets.



### nPTD - New Pivoting Tray Drawer

- New Pivoting Tray Drawer (nPTD) is a lower density solution, suitable for splicing and patching fibre optic cables. The internal layout of the trays can be easily integrated with splitters, WDM and any other passive device. nPTD trays can be configured both patch & splice mixed mode and patch only and they be supplied preloaded with adapters and pigtail (SC, LC, etc.).
- NPTD subracks are light gray RAL 7035 powder-coat painted. NPTD subracks can be mounted on ETSI frames by using suitable brackets.



### STD - Sliding Tray Drawer

Optotec Sliding Trays Drawer is mainly used for:

- Patching only (patch cords, connected breakout cables, intra-facility cables) or
- Splicing loose tube cables and patching the pigtails to patch cords
- Accurate design and compact adapters allow to accommodate 12 terminations (24 using SFF connectors) per tray.
- Swing-removable adapter holders make it easy to access each connection in the shelf.



### SSD - Sliding Splicing Drawer

The SSD is designed to splice "cables to cables" and "cables to pigtails". This can be used inside ODF racks. SSD can also be used inside OXF racks. (only 19" type). SSD also facilitates the installation with pre-assembly tubes to guide the fibres within the sub-rack to reach the splicing cassettes

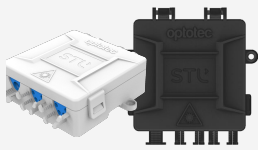




# OUTSIDE PLANT



## OPTICAL CLOSURES



### PicoBox

- An ultra-compact solution for the last mile secondary branching network
- Can store up to 8 splices and terminate up to 8 cables
- Ultra-compact dimensions (140x160x65mm)



### NanODC

- Suitable for managing outdoor/indoor cable transitions or cable repairs
- Capability to branch up to 12 single-fibre drop cables
- Compact dimensions (140 x 160 x 65mm)



### µODC - MicroODC

- Micro Optical Distribution Closures for in-line, butt-end or tap-off installations
- Splice positions up to 96f heat shrink or 72f crimp splice protectors
- Volume Size < 2 liters



### Max

- Ideal for FTTH Distribution / Local Cable to Cable splicing Distribution / Local Mid-Span Access and also Customer Drop Splicing
- Max 4 (4 liters) - 144F
- Max 6 (6 liters) - 288F



### CODC2 - CDOC2

- Compact Optical Distribution Closure (CODC2) are splice only closures
- Compact Demarcation Optical Closure (CDOC2) are patch & splices closures
- Capacity up to 432F splices or 96F splices and 24 adaptors



### ODC2 - DOC2

- Optical Distribution Closure (ODC2) are splice only closures
- Demarcation Optical Closure (CDOC2) are patch & splices closures
- Capacity up to 2112F splices or 288F splices and 48 adaptors

## RIBBON OPTICAL CLOSURES



### CORC2

- Designed especially for the management and splicing of Intermittently Bonded Ribbon (IBR) cables.
- Capacity up to 432F ribbon splices
- Available with Multi-elements cassettes 2x and 3x ribbon splice holders



### ORC2

- Designed especially for the management and splicing of Intermittently Bonded Ribbon (IBR) cables.
- Capacity up to 1728F ribbon splices
- Available with Multi-elements cassettes 2x and 3x ribbon splice holders

# HARDENED CONNECTIVITY



## Connectorized Block Terminal (CBT)

### OptoBlaze

- **Easy Installation** - Ergonomic design and zig zag port placement design ensures easy and fast installation
- **Wide Range** - Adheres to IEC Standards. Available in a 4-port, 8-port or 12-port configuration with or without preloaded splitters
- **Hang and Lock Mechanism** - Universal mounting bracket with a hang-and-lock mechanism makes it suitable for installation in hand-hole, pedestal, utility pole or on over head cable
- **Fast Installation** - Round self rodding drop cable results in an avg time savings of 5 minutes per aerial drop



## Pre-Connectorized Drop Cable

### OptoBolt

- OptoBolt is a factory-terminated hardened SC/APC connectorized single fibre round drop Cable, designed to significantly reduce installation time and overall subscriber connection costs.
- IP68 2m IEC 60529 rated product, tested for 2 meters depth of water for 7 days



## CRS

- Suitable for Butt-end closure for GPON distribution and as a termination point with microducts with drop blowing fibre connectors
- The STL CRS (Connector Ruggedized Shell) is suitable for use with LC/APC blown fibre connectors
- IP68 approved, even if the port is left open
- Splitter configuration options to enable 12 drops(3 x 1:4 splitter)
- 2x Network Ports for use with 7mm Micro-duct and up to 12 Fibre Bundle
- Compact dimensions (276 x 202 x 83mm) ideal for congested pits
- Protection connector cover can be factory fitted or retrofitted on site to LC cable



## Reasons To Use Hardened Connectivity

- Expedites the homes passed build rates as terminals come pre-installed from the factory. As it increases speed of deployment, the lead to cash accelerates.
- Minimizes the technical skills required of labor force
- Saves time at the drop installation when connecting homes
- Is an accurate and severe tested system ensuring reliability of each installed terminal
- Can be used as demarcation point
- Simple, ruggedized, no installation failures in the last mile network (where faults >80% of the whole network)



# CUSTOMER PREMISE



## Boxes

### Next Generation Boxes (NGB)

- Reliable design that adheres to the highest international quality standard (IEC 61753) in order to operate in internal and external installation conditions
- Available in 2 sizes - NGB1 and NGB2
- Simple Installation on both wall & poles
- Compact – Highest performance in minimum space
- Pack of up to 6 x 12F trays
- 3x pivoting SC/APC connections holders (8x/each)



## Facade Solution

### Drop Optical Point (DOP)

- Outdoor Cabling Solution with 'low profile' accessories to distribute the fibre
- Two distribution devices, feeder cable and 12 or 2 customers
- Window cut covering with tap off accessories
- DOP I ensures the protection of the window cutout on the multi-fibre cable in place.
- The cutout is necessary for the sectioning of the fibres to be extracted in the upstream devices.
- DOP III can handle up to a total of six single-fibre cables in either direction.



DOP I

DOP III





# Engineered Excellence, Validated by Stringent Testing

## Experienced R&D team and test centre in Europe



**IPX7-8 water immersion test**



**Pulling / Compression test**



**Dust proofing test**



**IPX3-4-5-6 water tightness test**



**UV Resistance Test**



**Vibration test**



**Thermal cycle with product under pressure**



The STL logo features the letters 'STL' in a bold, white, sans-serif font. A small green arrow points to the right from the top of the letter 'L'.

**STL**

| beyond tomorrow

## About STL

STL is a leading global integrator of digital networks. We design, manufacture, and deploy intelligent solutions for 5G, FTTx, rural broadband, and enterprise networks. Driven by the purpose of 'Transforming Billions of Lives by Connecting the World', STL fosters innovation in optical connectivity, global services, and digital network solutions. We operate in 4 continents with customers in over 100 countries. Sustainability is a core principle at STL, with a commitment to achieving Net Zero emissions by 2030. Our dedication to customer-centricity, R&D, and sustainability has earned us numerous recognitions, including 'Great Place to Work' awards and 'Best Organisation for Women'.

01/092024

**For additional information please contact your sales representative.**

You can also visit our website at [www.stl.tech](http://www.stl.tech)

The information given herein, including drawings, illustrations and schematics are intended for illustration purposes only and is believed to be reliable. However, STL makes no warranties to its accuracy or completeness and disclaims any liability in connection with its use. STL obligations shall be only set forth in STL standard terms and conditions of the sale and in no case, STL be liable for any incidental, indirect or consequential damages arising out of sale, resale, use or misuse of the product. Users of STL products should make their own evaluation to determine the suitability of such each product for the specific application.