

optotec WBO

customizable wall-mounting boxes



Optotec WBO is an environmentally sealed enclosure for fibre management that provides splicing and patching as well as components integration.

The innovative design and flexibility of the product make it unique for outdoor applications both as wall and pole field mountable product.

This stainless steel fibre optic enclosure has been developed to be used in severe conditions and where safety, long term reliability, harsh environmental conditions and mechanical liability are required. They are widely deployed in underground high speed railways tunnels and in sea windmill farms (marine-grade stainless steel provided).

APPLICATIONS

- OSP Drop cable terminations in access networks
- Telecommunication enclosure for termination of optical cables
- Double access environmentally protected

INSTALLATIONS

- Wall
- Poles

KEY FEATURES AND BENEFITS

- Stainless steel housing and metal parts
- Degree of protection IEC144: IP 66
- Stainless steel fixing tabs welded to the cabinet structure
- Max 3 cable entries with stainless steel cable glands.
- Max 6 steel outlets for break-out cables or for 8 single fibers each
- 180 ° opening and removable door
- Double locking with customizable key
- Arrangement for connecting the cabinet structure to the ground
- Arrangement for reinforcing the main cable connection

DIMENSIONS AND COMPONENTS

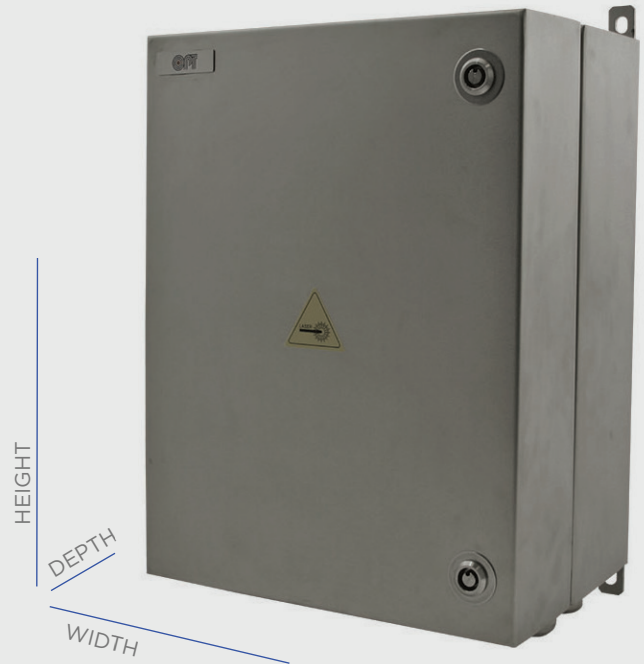
DIMENSIONS

WBO SIZES

Width 300 mm
Height 380 mm
Depth 210 mm
Weight -11 kg

Protection Level IEC 60529, IP66

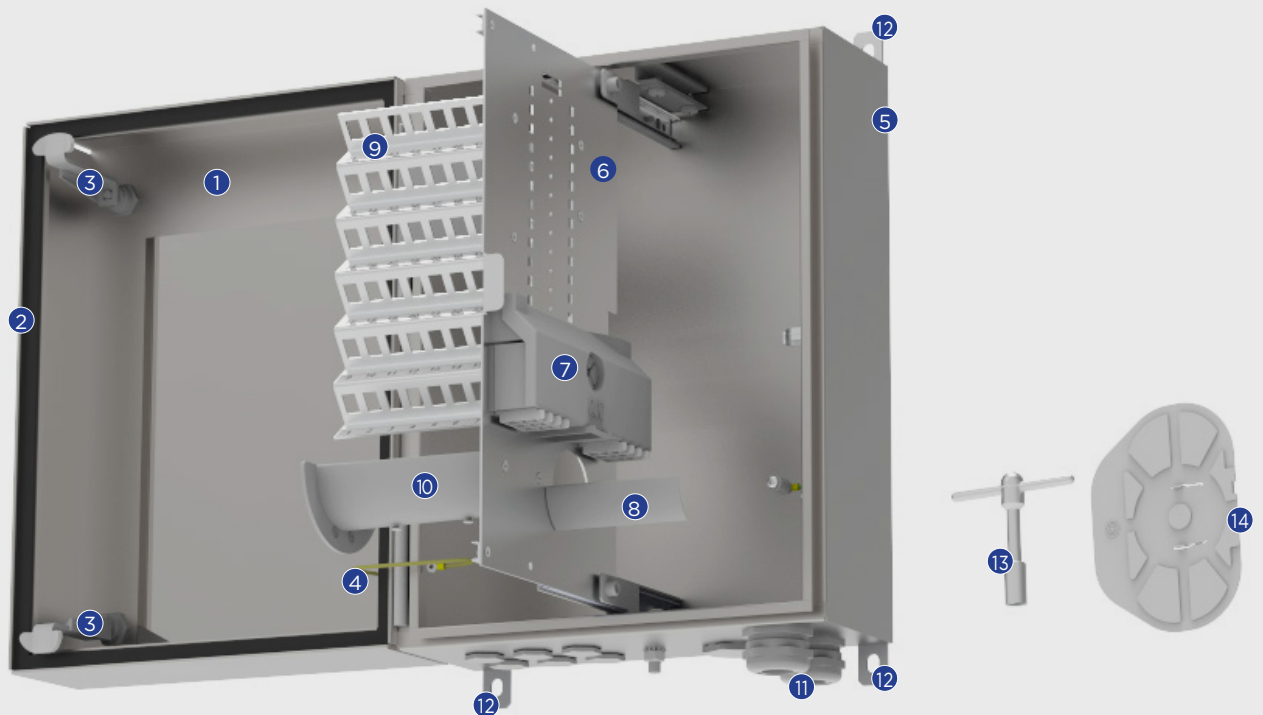
Material Stainless steel AISI304 or AISI314L



COMPONENTS AND CONFIGURATIONS

WBO BASIC ITEMS

1 Cover	5 Base	9 Patch area	13 Stainless steel key
2 Gasket	6 Splice area	10 Drum	14 UC-Universal Cover
3 Watertight door lock	7 Mixer	11 Pg29 Cable glands (16-22mm)	
4 Grounding	8 Fiber bending limiter	12 Wall-mounting eyelets	



The information given herein, including drawings, illustrations and schematics are intended for illustration purposes only and is believed to be reliable. However, STL makes no warranties to its accuracy or completeness and disclaims any liability in connection with its use. STL obligations shall be only set forth in STL standard terms and conditions of the sale and in no case, STL be liable for any incidental, indirect or consequential damages arising out of sale, resale, use or misuse of the product.

Users of STL products should make their own evaluation to determine the suitability of such each product for the specific application.

WBO CONFIGURATIONS AND CAPACITIES

SPLICE SIDE

FIBER SPLICE PROTECTION

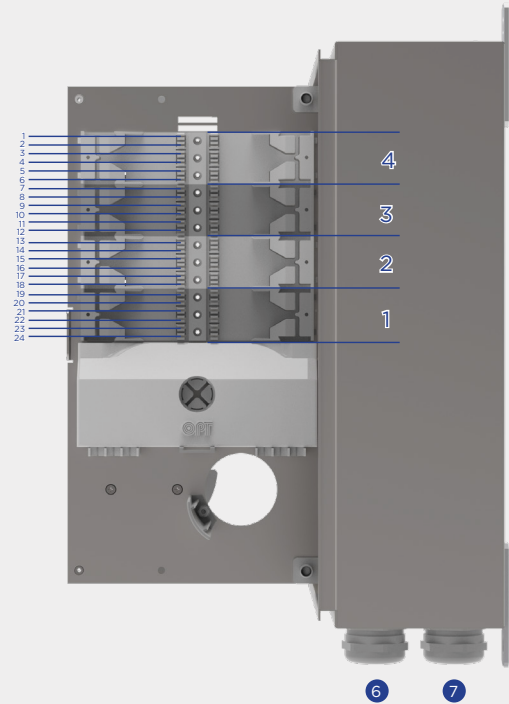
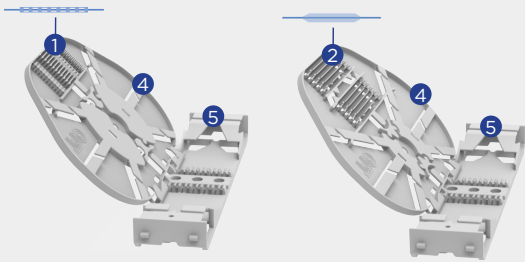
1	Mechanical Crimp (12 per HD tray)	UP TO 288 FIBRES
2	Heat-Shrinkable (12 per HD tray)	UP TO 288 FIBRES

SPLICE MODULE SAMX HD6

4	HD tray	UP TO 24 PCS
5	WAPX base for 6 HD tray	UP TO 4 PCS.

CABLES SEALING

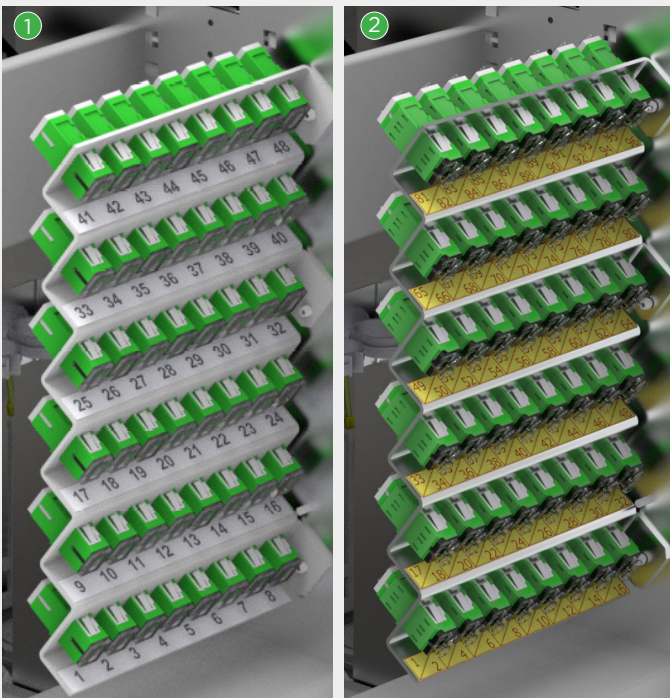
6	3 PG29 16-22mm feeder cables (no midspan)	IN/OUT
7	6 PG16 8-15mm drops cables	IN/OUT



PATCH SIDE

WITH ADAPTERS

1	SC or ST	UP TO 48
2	LC	UP TO 96

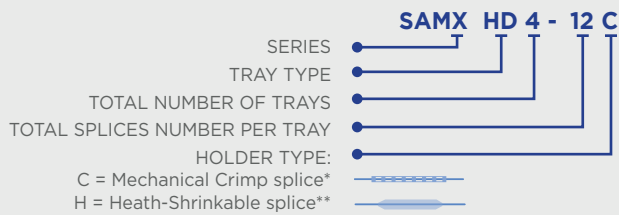


The information given herein, including drawings, illustrations and schematics are intended for illustration purposes only and is believed to be reliable. However, STL makes no warranties to its accuracy or completeness and disclaims any liability in connection with its use. STL obligations shall be only set forth in STL standard terms and conditions of the sale and in no case, STL be liable for any incidental, indirect or consequential damages arising out of sale, resale, use or misuse of the product.

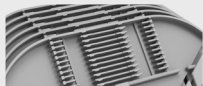
Users of STL products should make their own evaluation to determine the suitability of such each product for the specific application.

GUIDE TO SPLICE

TO UNDERSTAND OPTOTEC'S MODULES CONCEPT

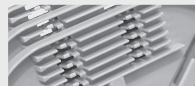


*HOLDER TYPE C



HOLDER type C is used with Mechanical Splice protection.

**HOLDER TYPE H

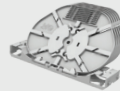

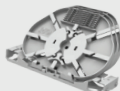




HOLDER type H is used with heat-shrinkable splice protection. Some HD trays with HOLDER type H can arrange up to 3 splice layers.

MECHANICAL CRIMP SPLICE

MODULE TYPE SAMX	TRAY PER PACK	SPLICES PER TRAY	TOTAL NUM. SPLICES PER MODULE
HD4-12C 	4	12C	48
HD6-12C 	6	12C	72

HEAT-SHRINKABLE SPLICE

MODULE TYPE SAMX	TRAY PER PACK	SPLICES PER TRAY	TOTAL No. SPLICES PER MODULE
HD6-8H 	6	8H	48
HD6-12H 	6	12H	72
HD3-24H 	3	splices per tray arranged on 3 LAYERS (8+8+8) = total. 24H	72
HD4-12H 	4	splices per tray arranged on 2 LAYERS (6+6) = total. 12H	48
HD4-24H 	4	splices per tray arranged on 2 LAYERS (12+12) = total. 24H	96

GUIDE TO PATCH

ADAPTERS

The importance to be small

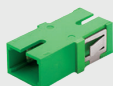
Optotec propose SC and LC duplex SC - footprint adapters with the the lowest profile height (14.8 mm) in the industry. They include metal spring panel-mount clips that enable more compact stacking and fast installation time. They provide 30% space saving versus previous industry standard versions.

A matter of quality

Optotec adapters design, material and manufacturing process assure long life and high repeatability of optical performances even for different brand connectors mating. Each style of Optotec adapter can be mounted on patch panels through flange holes by screw fixing of the housing or by retention springs.

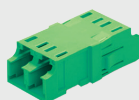
SC family
IEC 61754-4

SIMPLEX



LC family
IEC 61754-19

DUPLEX
sc-footprint



ST family
IEC 61754-2
BOFC/2.5

SIMPLEX



The information given herein, including drawings, illustrations and schematics are intended for illustration purposes only and is believed to be reliable. However, STL makes no warranties to its accuracy or completeness and disclaims any liability in connection with its use. STL obligations shall be only set forth in STL standard terms and conditions of the sale and in no case, STL be liable for any incidental, indirect or consequential damages arising out of sale, resale, use or misuse of the product.

Users of STL products should make their own evaluation to determine the suitability of such each product for the specific application.