

STL

stl.tech

estelan

ENTERPRISE
BUSINESS SOLUTIONS

Product Portfolio

Index

01

About STL	1
-----------------	---

02

Global Manufacturing Operations	2
---------------------------------------	---

03

Choice for Enterprise LAN	3
---------------------------------	---

04-10

Copper Portfolio

• Twisted Pair Cable	4
• Keystone Outlet	7
• Faceplate	8
• Patch Panel	9
• Copper Patch Cords	10

11-19

Fibre Portfolio

• Optical Fibre Cable	11
• Optical Fibre Patch Cords	12
• Fibre Management System & Accessories	13
• MPO Patch Cords & Trunk Cables	13
• 12/24F MPO to LC Cassette	14
• 1RU Panel for MPO Cassette	14
• Rack Mount Splitters	15
• Home Fibre Termination Box (HFTB)	15
• Fibre Cable Assemblies	16
• Wall Mount Fibre Management System	16
• Wall Mount Fibre Management System High Density	17
• IP55 & IP66 ENCLOSURE	17
• Blank Plates	18
• Cable Lacing Bar	18
• ONU Wall Racks	19



A leading optical and digital solutions company.



Research and Development
4 Innovation Centres



Strong DNA of Innovation
650* Patents across the network layer
*As on end of FY23

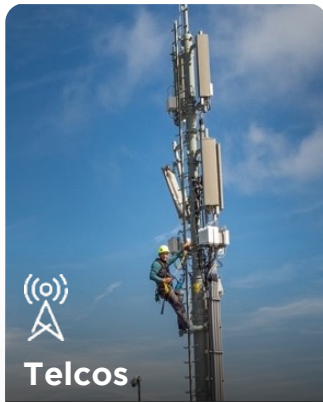


World class manufacturing facilities in
India, US, China, Brazil & Italy




Advanced product offerings to build
5G, Rural, FTTx, Enterprise and Data Centre networks

Creating hyper-scale Digital Infrastructure




Telcos

To connect each customer with the latest data applications while ensuring better experience.




Cloud Companies

To enable future application and immersive content by bringing computer & storage capabilities to the edge



Citizen Networks

To empower every citizen with high quality primary connectivity.



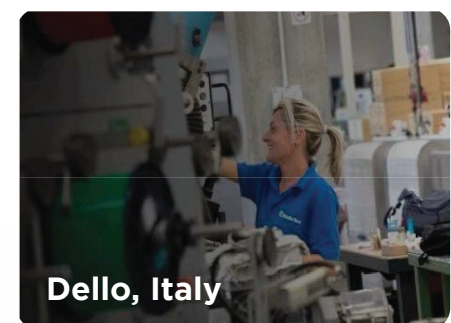
Large Enterprises

To create secure networks for the specialized enterprise use cases.

Global Manufacturing Operations

STL is a leading global optical and digital solutions company providing advanced offerings to build 5G, Rural, FTTx, Enterprise and Data Centre networks. The company, driven by its purpose of 'Transforming Billions of Lives by Connecting the World' designs and manufactures in 4 continents with customers in more than 100 countries.

STL has a strong global presence with design and manufacturing capabilities in India, Italy, the UK, the US, China, and Brazil.



The choice for Enterprise LAN

Beyond a rich legacy of developing fibre optics, data communication cabling and connectivity products, we aspire to make your experience from enquiry through installation as seamless as possible.

Telecom operators, cloud companies, citizen networks, and large enterprises across the world recognize and rely on STL to build ubiquitous and future-ready digital networks. We are driven by customer-centricity, R&D and sustainability. Championing sustainable manufacturing, the company has committed to achieve Net Zero emissions by 2030.



Usability

- Our products are engineered with you in mind. usability is key.
- The scalability and compatibility of the solution serves you for the long-run.



Value

- Our teams have decades of product innovation and network solutions knowledge.
- Designed with affordable quality in mind, Estelan meets industry standards.



Responsible

- Sustainable solutions that are RoHS, ETL, UL, GHMT and CPR certified.
- A commitment to responsible manufacturing, products and packages are designed with miniaturisation and minimising materials and waste in mind, along with our regional distribution model keeping the supply close to the market.
- Cables manufactured at Zero Waste to Landfill certified facility.



Support

- We offer 25 year warranties* for our products and systems.
- We offer design and tech support.
- Ecosystem of well-trained and certified distributors and system integrators.
- Looking for a bespoke solution? Talk to us. We'd love to innovate with you.

* According to STL Policy

Copper Portfolio

Twisted Pair Cable

We offer a comprehensive range of data cables for a variety of applications in structured cabling, including customized cable designs in UTP (Unshielded Twisted Pair), STP (Shielded Twisted Pair), indoor and outdoor categories. Our data cables address different physical layer field applications, be it for enterprise networks, education, WiFi, CCTV Surveillance and other building applications.

Estelan copper cables offer hyper reliability and deliver superior performance in data transmission. Customers across the globe have augmented their networks with Estelan superior noise immunity data cables that offer high headroom at both, low and high frequencies. Our cable complies with PoE performance.



Cat7 S/FTP Cable

Product Code/ Part No.

Part No.	Product Name	Euro Class	ETL Verified	UL Listed	UL Verified
42627-C1C2P1P2	Cat7 S/FTP Cable	CPR-Eca	✓	✓	on demand

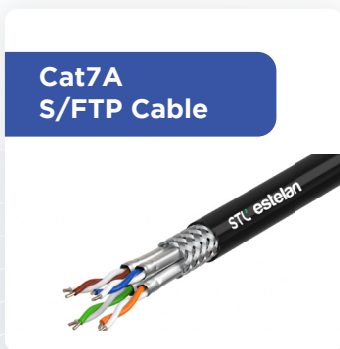
Note: Higher CPR Category will be made available on demand

Jacket Colour (C1 C2)

- Grey (01)

Packaging (P1 P2)

Available in 305M (04) /500M (05) reels



Cat7A S/FTP Cable

Application:

- All Ethernet applications which includes
- 10/100/1000 Base T or 1000 Base TX
 - 10 G Base - T
 - Voice, Data , CATV & Cable transmission performance is tested up to 1000 MHz Complied to ISO IEC 11801 : 2011 Class FA cabling , IEC 61156-5

Jacket Colour (C1 C2)

- Orange (06)

Packaging (P1 P2)

Available in 305M (04) /500M (05) reels



Product Code/ Part No.

Part No.	Product Name	Euro Class	ETL Verified	UL Listed	UL Verified
32127-C1C2PIP2	Cat 6A U/UTP-LSZH	CPR-Eca	✓	✓	on demand

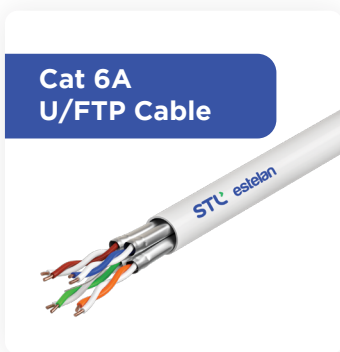
Note: Higher CPR Category will be made available on demand

Jacket Colour (C1 C2)

- Grey (01)
- Blue (02)
- Red (03)
- White (04)
- Violet (05)
- Orange (06)
- Yellow (07)

Packaging (P1 P2)

Available in Reel of 305m (1000ft) **(04)** / Reel of 500m (1640ft) **(05)**
 Length Tolerance: +/- 2 meter



Product Code/ Part No.

Part No.	Product Name	Euro Class	ETL Verified	UL Listed	UL Verified
32527-C1C2PIP2	Cat 6A U/FTP-LSZH	CPR-Eca	✓	on demand	on demand

Note: Higher CPR Category will be made available on demand

Jacket Colour (C1 C2)

- Grey (01)
- Blue (02)
- Red (03)
- White (04)
- Violet (05)
- Orange (06)
- Yellow (07)

Packaging (P1 P2)

Available in Reel of 305m (1000ft) **(04)** / Reel of 500m (1640ft) **(05)**
 Length Tolerance: +/- 2 meter



Product Code/ Part No.

Part No.	Product Name	Euro Class	ETL Verified	UL Listed	UL Verified
32427-C1C2PIP2	Cat 6A F/FTP-LSZH	CPR-Eca	on demand	on demand	on demand

Note: Higher CPR Category will be made available on demand

Jacket Colour (C1 C2)

- Grey (01)
- Blue (02)
- Red (03)
- White (04)
- Violet (05)
- Orange (06)
- Yellow (07)
- PE-Black(08)

Packaging (P1 P2)

Available in Reel of 305m (1000ft) **(04)** / Reel of 500m (1640ft) **(05)**
 Length Tolerance: +/- 2 meter

Cat 6A S/FTP Cable



Product Code/ Part No.

Part No.	Product Name	Euro Class	ETL Verified	UL Listed	UL Verified
32627-C1C2P1P2	Cat 6A S/FTP-LSZH	CPR-Eca	on demand	on demand	on demand

Note: Higher CPR Category will be made available on demand

Jacket Colour (C1 C2)

- Violet (05)

Packaging (P1 P2)

Available in Reel of 305m (04) / Reel of 500m (05)

Cat6 U/UTP Cable-23AWG



Product Code/ Part No.

Part No.	Product Name	Euro Class	ETL Verified	UL Listed	UL Verified
22127-C1C2P1P2	Cat6 U/UTP-LSZH-23AWG	CPR-Eca	✓	on demand	on demand
21127-C1C2P1P2	Cat6 U/UTP-PVC-23AWG	CPR-Eca	✓	✓	✓
23126-C1C2P1P2	Cat6 U/UTP-PE-23AWG	CPR-Fca	on demand	on demand	on demand

Note: Higher CPR Category will be made available on demand

Jacket Colour (C1 C2)

- Grey (01)
- Blue (02)
- Red (03)
- White (04)
- Violet (05)
- Orange (06)
- Yellow (07)
- PE-Black(08)

Packaging (P1 P2)

Available in Reelex II packing of 305m (1000 ft) (03);
 Available in Reel in box of 305m (1000ft) (04); Reel of 500m (1640ft) (05)
 Length Tolerance: +/- 2 meter



Cat6 U/UTP Cable-24AWG



Product Code/ Part No.

Part No.	Product Name	Euro Class	ETL Verified	UL Listed	UL Verified
22137-C1C2P1P2	Cat6 U/UTP-LSZH-24AWG	CPR-Eca	on demand	on demand	on demand
21137-C1C2P1P2	Cat6 U/UTP-PVC-24AWG	CPR-Eca	✓	✓	✓

Note : Higher CPR Category will be made available on demand

Jacket Colour (C1 C2)

- Grey (01)
- Blue (02)
- Red (03)
- White (04)
- Violet (05)
- Orange (06)
- Yellow (07)
- PE-Black(08)

Packaging (P1 P2)

Available in Reelex II packing of 305m (1000 ft) (03);
 Available in Reel in box of 305m (1000ft) (04); Reel of 500m (1640ft) (05)
 Length Tolerance: +/- 2 meter

Cat 5e U/UTP Cable



Product Code/ Part No.

Part No.	Product Name	Euro Class	ETL Verified	UL Listed	UL Verified
12137-C1C2PIP2	Cat5e U/UTP-LSZH	CPR-Eca	on demand	on demand	on demand
11137-C1C2PIP2	Cat5e U/UTP-PVC	CPR-Eca	✓	✓	✓
13136-C1C2PIP2	Cat5e U/UTP-PE	CPR-Fca	on demand	on demand	on demand

Note: Higher CPR Category will be made available on demand

Jacket Colour (C1 C2)

- Grey (01)
- Blue (02)
- Red (03)
- White (04)
- Violet (05)
- Orange (06)
- Yellow (07)
- PE-Black(08)

Packaging (P1 P2)

Available in Reelex | packing of 305m (1000ft) (02)
Length Tolerance: +/- 2 meter

Keystone Outlet

STL Estelan range of keystone outlets conform to Class E and EA performance respectively as defined in ISO/IEC 11801, TIA 568 and EN 50618. Each jack is available with both 180° and 90° termination design, wiring diagram and conductor protection cap. STL keystone outlet are perfect for high-density applications, due to their small form factor.

Cat6A Keystone Outlet

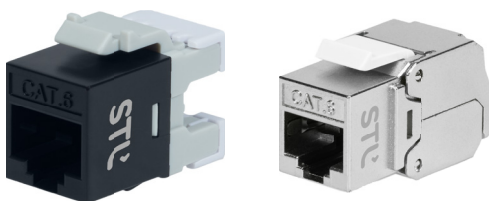


Product Code/ Part No.

Part No.	Description
NXIOC6ASX180XX	Keystone Outlet, Shielded 180°
NXIOC6ASX090XX	Keystone Outlet, Shielded 90°
NXIOC6AUX180XXLD	Keystone Outlet with LED Unshielded 180°
NXIOC6AUX180XX	Keystone Outlet, Unshielded 180°
NXIOC6AUX090XX	Keystone Outlet, Unshielded 90°

Note: XX= Colour (Refer to the datasheet for details)

Cat6 Keystone Outlet



Product Code/ Part No.

Part No.	Description
NXIOC06UX180XX	Keystone Outlet, Unshielded 180°
NXIOC06UX180XXLD	Keystone Outlet with LED Unshielded 180°
NXIOC06UX090XX	Keystone Outlet, Unshielded 90°

Note: XX= Colour (Refer to the datasheet for details)

Faceplate

The shuttered faceplate allows mounting of keystone outlets in all the installation requirements. The standard faceplates are available in white high impact plastics and are ABS UL 94V-0 compliant. The accessories include labels and mounting screws.



Product Code/ Part No.

Part No.	Description
NXFP01BSXX	Faceplate Shuttered UK Style (86x86), Single
NXFP02BSXX	Faceplate Shuttered UK Style, Dual
NXFP04BSXX	Faceplate Shuttered UK Style, Quad
NXFP01USXX	Faceplate 1 Port US Style (70x140)
NXFP02USXX	Faceplate 2 Port US Style
NXFP04USXX	Faceplate 4 Port US Style

Note: XX= Colour (Refer to the datasheet for details)



EU Gang Face Plates

Product Code/ Part No.

Part No.	Description
NXFP02EUWH	EU Face plate 2Port White



EU Unloaded Shuttered Modules

Product Code/ Part No.

Part No.	Description
NXFP02EAWH	EU Face plate 2Port Angled White

Backbox



Product Code/ Part No.

Part No.	Description
NXGBBSXX	Backbox for UK Style faceplate

Note: XX= Colour (Refer to the datasheet for details)

Patch Panel

STL Estelan modular patch panels offers fast and reliable installation of unshielded and shielded cables. A rear cable management bar is supplied along with the patch panel, which acts as stress reliever for terminated cables. Each port of the panel is numbered for clear port identification. Accessories include mini cable ties, cage nuts and rear cable management.

Straight Patch Panel



Product Code/ Part No.

Part No.	Description
NXPPUXSTRE1U24	Copper Patch Panel Straight, 24 Modular Port Unloaded, 1U, Unshielded, Wire Manager Included
NXPPSXSTRE1U24	Copper Patch Panel Straight, 24 Modular Port Unloaded, 1U, Shielded, Wire Manager Included

Angled Patch Panel



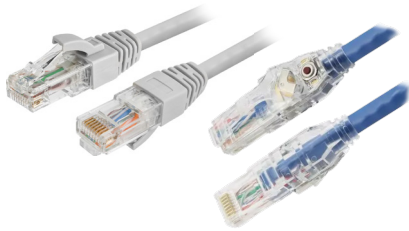
Product Code/ Part No.

Part No.	Description
NXPPUXANGE1U24	Copper Patch Panel Angled, 24 Modular Port Unloaded, 1U, Unshielded, Wire Manager Included
NXPPSXANGE1U24	Copper Patch Panel Angled, 24 Modular Port Unloaded, 1U, Shielded, Wire Manager Included

Copper Patch Cord

High-speed Gigabit, LSZH/PVC, RJ45 patch cord delivers optimal transmission and networking performance with reduced insertion loss and alien crosstalk. These high performance copper patch cords designed to meet all Cat6/Cat6A specifications are available in multiple lengths.

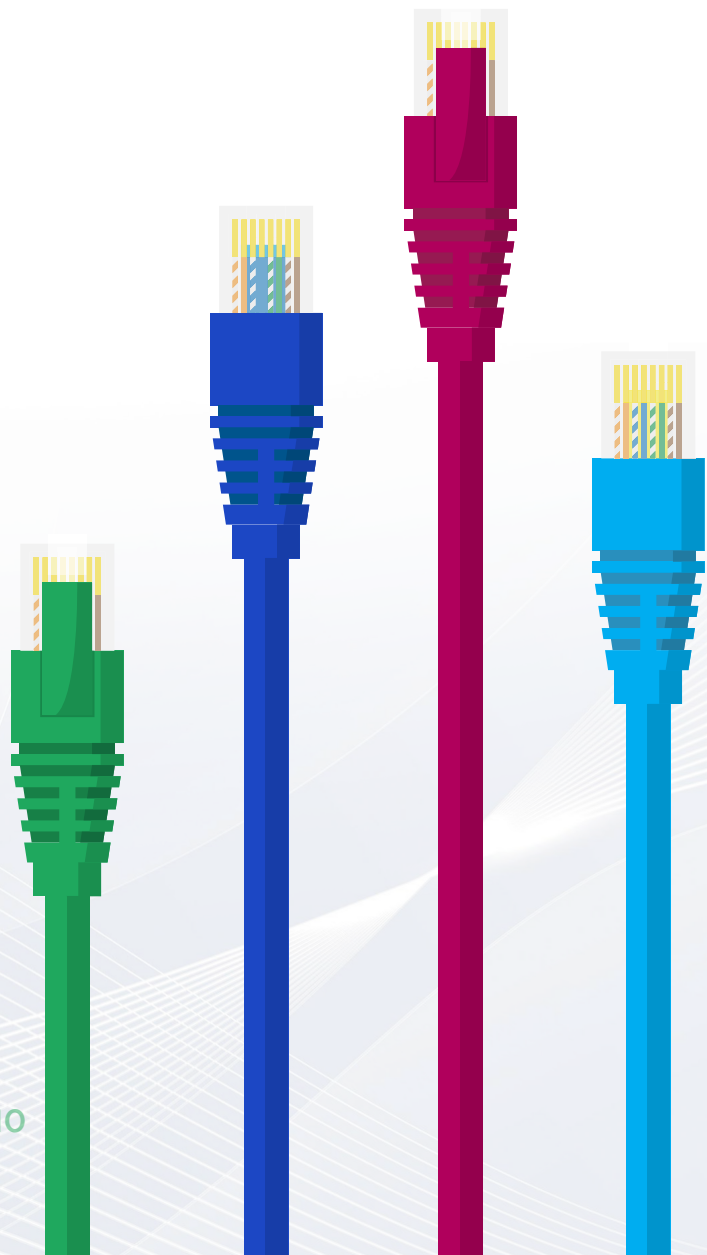
Copper Patch Cords



Product Code/ Part No.

Part No.	Description
NXPCC6A Series	High Speed 10G CAT6A Patch cords
NXPCC06 Series	High Speed 1G CAT6 Patch cords
NXPCC06 LED Series	High Speed 1G CAT6 Patch cords with LED
NXPCC06A LED Series	High Speed 10G CAT6A Patch cords with LED
NXPCC6AS5Z28XXYYLD	CAT6A Patch cord with LED S/FTP 28AWG LSZH

(Refer to the datasheet for details)

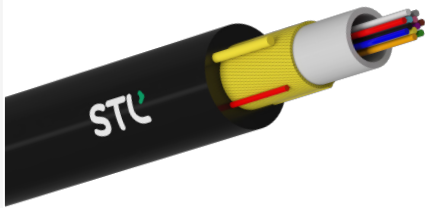


Fibre Portfolio

Optical Fibre Cable

STL designs and manufactures a comprehensive line of fibre optic cables ranging from outside plant to indoor/outdoor. STL fibre optic cabling systems are ideal for premises, inter and intra-building backbone connectivity for campuses. We offer high-performance optical fibre cable designs that meet or exceed industry standards. Our wide range of fibre optic cables include tight buffer, and loose tube constructions with industry-leading single-mode and multi-mode fibre.

Drop Lite Unitube Single Sheath Aerial Drop OFC

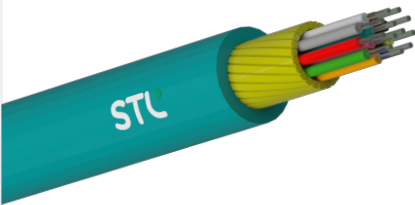


Product Code/ Part No.

Part No.	Product Name
F1YYYYXX01GUP10000	Drop Lite Unitube Single Sheath Aerial Drop

Note: YYYY= Fibre Count, XX= Fibre Type (Refer to the datasheet for details)

Tight Buffer LSZH Riser OFC



Product Code/ Part No.

Part No.	Product Name
M30006XX06NNTL10000	6F Tight Buffer LSZH Riser Cable
M30008XX08NNTL10000	8F Tight Buffer LSZH Riser Cable
M30012XX12NNTL10000	12F Tight Buffer LSZH Riser Cable
M30024XX24NNTL10000	24F Tight Buffer LSZH Riser Cable

Note: XX= Fibre Type (Refer to the datasheet for details)

Armor Lite Unitube Single Jacket Armored OFC

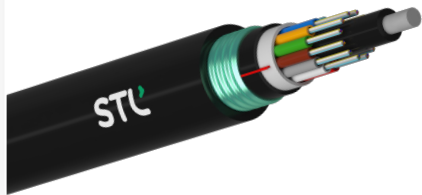


Product Code/ Part No.

Part No.	Product Name
G1YYYYXX01GUB10000	Armor Lite UT Single Jacket Armored OFC

Note: YYYY= Fibre Count, XX= Fibre Type (Refer to the datasheet for details)

Armor Lite Multitube Single Sheath Armored OFC



Product Code/ Part No.

Part No.	Product Name (Armor Lite MT Single Sheath Armored OFC)
B1YYYYXX01GAP10200	12F (12Fx1T) MLT Armored OFC
B1YYYYXX02GAP10100	24F (12Fx2T) MLT Armored OFC
B1YYYYXX03GAP10100	36F (12Fx3T) MLT Armored OFC
B1YYYYXX04GAP10100	48F (12Fx4T) MLT Armored OFC
B1YYYYXX05GAP10100	60F (12Fx5T) MLT Armored OFC
B1YYYYXX06GAP10100	72F (12Fx6T) MLT Armored OFC
B1YYYYXX08GAP10300	96F (12Fx8T) MLT Armored OFC
B1YYYYXX12GAP10100	144F (12Fx12T) MLT Armored OFC

Note: YYYY= Fibre Count, XX= Fibre Type (Refer to the datasheet for details)

Optical Fibre Patch Cords

Fibre optic cable assemblies are designed for use in telecommunications, data communications and Local area network applications. The patch cords are available with 2mm/3mm jackets and 0.9mm pigtails with LC connector. The pigtails & patch cords comes with LSZH Jacket.

Optical Fibre Patch Cords



Product Code/ Part No.

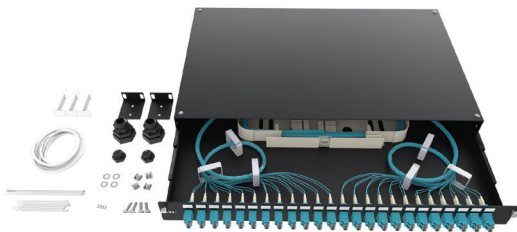
Part No.	Description
DPB Series	LC Uniboot/ Duplex patch cords
DPT Series	LC Pigtail Single mode

(Refer to the datasheet for details)

Fibre Management System & Accessories

STL Fibre Management System (FMS) shelf series is ideal for high density front patching applications. Its compact design and high density capacity allows to deliver carrier class fibre management to LAN and Enterprise Networks.

Fibre Management System



Product Code/ Part No.

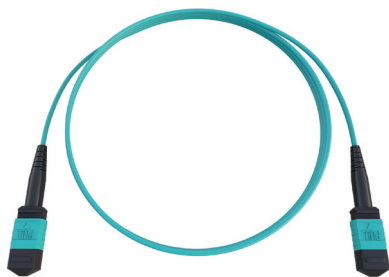
Part No.	Description
NXFMR12MP12LPD1YYY	19" 1U 12F FMS Adaptor loaded

Note: YYY = Adaptor type, XXX= Length in Meter (Refer to the datasheet for details)

MPO Patch Cords & Trunk Cables

STL MPO patch cables are optimized for data center connectivity supporting the topologies as specified in the data center standards EN50173-5 and ISO/IEC 24764. With the combination of MPO patch cables, MPO to LC/SC Cassettes modules and other plug and play accessories, it is very easy and convenient to build 10/40/100G network.

MPO Patch Cords and Trunk Cables



Product Code/ Part No.

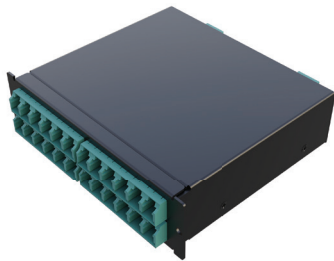
Part No.	Description
MPP Series	MPO Fibre Patch cord
MPT Series	MPO Fibre Trunk cable

(Refer to the datasheet for details)

12/24F MPO to LC Cassette

STL MPO to LC modular cassette modules with the flat mounting panel are the best suited solutions for providing connectivity in enterprise networks. Modular and light weight cassettes made of AL provides a reliable and low loss connectivity option to split the connections for 10/40/100G connections as needed. The modular and high-density arrangement helps in connecting 48 LC ports in 1RU space.

12/24F MPO to LC Cassette



Product Code/ Part No.

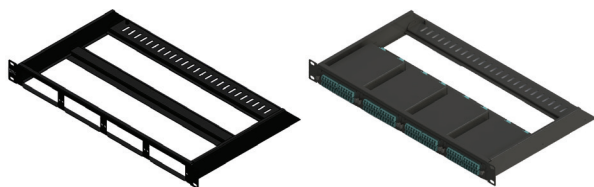
Part No.	Product Name
MCMXPYYGZZ	MPO to LC/UPC modular Cassettes
MCMXPYYMZZ	MPO to MPO modular Cassettes

Note: X = Base, YY= MPO Type, ZZ= Fibre Type

1RU Panel for MPO Cassette

STL 1RU panel is a custom designed panel for MPO cassettes. Made of CRCA steel sheet with black coating, this panel is very sturdy and provides long service life. Flat 1RU panel with 19 inch width is best suited for mounting inside the equipment racks. The rear cable support bar with slots for velcro tie is the ideal solution to support and secure the connecting cable loop without entangling with other adjacent cables.

1RU Panel for MPO Cassette



Product Code/ Part No.

Part No.	Product Name
FMR05AL12NA	1RU Panel for MPO to LC with support bar, Black

Rack Mount Splitters

STL rack mount splitters MXN are based on planar lightwave circuit technology and high precision alignment. MxN splitters can split or combine light from one or two fibres into N outgoing fibres uniformly over a wide spectral range with ultra low insertion loss and low polarization dependent loss. STL splitters are highly compact and offer excellent optical performance with high reliability. These splitters are fully compliant with Telcordia GR-1209/1221 and are suitable for outside plant environment.

Rack Mount Splitters



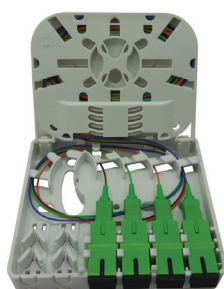
Product Code/ Part No.

Part No.	Product Name
FBR2011901NA	OCFPS Fibre Optic Splitter Panel, one 2x32, symmetrical, planar, singlemode, SC/APC, 1U, 19 in, gray
FBR201NA06NA	OCFPS Fibre Optic Splitter Panel, one 2x32, symmetrical, planar, singlemode, LC/APC, 1U, 19 in, gray

Home Fibre Termination Box (HFTB)

STL Home Fibre Termination Box (HFTB) is a compact wall outlet used for the final termination of fibre at the customer premises. The HFTB provides mechanical protection to the fibre and provides housing to the fibre without impacting the aesthetic layout of the customer premises. HFTB is compatible with various fibre termination techniques like SC and LC.

Home Fibre Termination Box



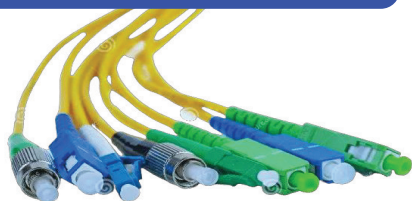
Product Code/ Part No.

Part No.	Product Name
FTT4USM0503	Micro ODF with Splicing capacity for 4 Fibres
FTT02SM011U	4 Port Micro Odf With 2 Sc Apc And 2 Lc Apc Adapter Included
LCCUS0203NA	LC-LC SM Duplex Adapter
FKASCAPCWF001	SC/APC Simplex Adapter
LCAPC0209NA	LC/APC Duplex Adapter

Fibre Cable Assemblies

STL Fibre Optic Cable Assemblies are designed for use in telecommunications, CATV, data communications and wide area network applications. Pigtails are single fibre cables preassembled with a connector at one end. They are typically used to terminate primary coated fibre to optical equipment. Patch cords / Jumpers are single fibre cables preassembled with a connector(s) at both ends to cross-connect patch panel to patch panel and to interconnect patch panels to optical equipment. For all connectors used on the pigtailed and patch cords / jumpers, the matching connector mating adapter kits are available and can be ordered separately.

Fibre Cable Assemblies



Product Code/ Part No.

Part No.	Product Name
LC030109	Singlemode Lc-uc .9mm Pigtail, Yellow, 1 Meter
FKTSAA1S2019L0100	SC/APC Pigtail, 1M
LC0101091MTR	LC/APC Pigtail, 1M
PCSC01091M	Fibre Optic Patch Cord, Simplex, SM, SC/APC to SC/APC, yellow, 1 m
PCLC0101091M	Fibre Optic Patch Cord, Simplex SM, LC/APC to SC/APC, yellow, 1 m
PCSC01193M	Fibre Optic Patch Cord, Simplex, SM, SC/APC to SC/APC, yellow, 3 m
PCLC020502193M	Lc-lc Sm Duplex Fibre Patch Cord, Lszh, 3 Meter
PCSC010503193M	Sc/apc - Lc/upc Sm Duplex Fibre Patch Cord, Lszh, 3 Meter
PCLC010503193M	Lc/apc - Lc/upc Sm Duplex Fibre Patch Cord, Lszh, 3 Meter
PCSC010501093M	Fibre Optic Patch Cord, Duplex SM, LC/APC to SC/APC, yellow, 3 m

Wall Mount Fibre Management System

STL Fibre Management System (FMS) shelf series is ideal for high density front patching applications. Its compact design and high density capacity allows to deliver carrier class fibre management to central offices, POPs, FTTx, mobile systems and LANs.

Wall Mount Fibre Management System



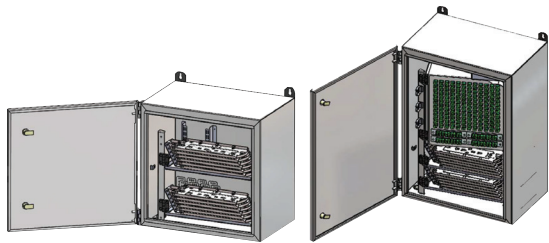
Features

- Splicing to factory terminated pigtailed
- Provision for cable anchoring
- Easy Access to splice tray
- Multiple connector options. Easy inter-changeability
- Cable entry from rear side. Radius controlled cable routing
- Front Access to cable connectors
- Screen printed panels for easy identification
- Colour - RAL 7035

Wall Mount Fibre Management System High Density

STL Fibre Management System (FMS) shelf series is ideal for high density front patching applications. Its compact design and high density capacity allows it to deliver carrier class fibre management to central offices, POPs, FTTx, mobile systems and LANs.

Wall Mount Fibre Management System High Density



Features

- Splicing to factory terminated pigtails
- Provision for cable anchoring
- Easy Access to splice tray
- Multiple connector options. Easy inter-changeability
- Cable entry from rear side. Radius controlled cable routing
- Draw out or swing out tray options
- Front Access to cable connectors
- Screen printed panels for easy identification
- Colour - RAL 7035

IP55 & IP66 Enclosure

STLENC IP55 & IP66 series outdoor enclosure racks are designed for industrial applications. They are based on IP55 & IP66 safety class and protected against water and dirt ingress. Both enclosures come with load capacity of 100 kg. These enclosures are available in a range of heights and depths and also as single or double walled. Integrated air ventilation inlets ensure the entry of fresh air from both sides.

IP55 & IP66 Enclosure

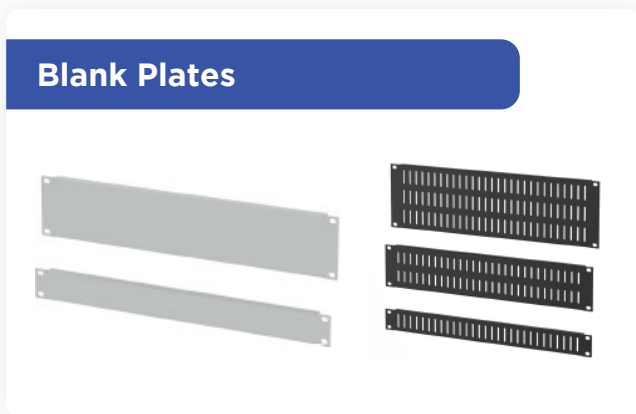


Features

- Safety class rating IP66 for outdoor applications
- Load capacity 100 kg
- Mono-block welded top and bottom cases
- Powder painted in RAL 7035 or RAL 7032
- Front door is sealed, locked and strong
- Integrated air ventilation inlets ensure entry of fresh air
- Double left/right IP66 filters
- Full height front and rear adjustable galvanized steel 19" profiles
- Hinged fan module protective cover with snap-on feature
- There are two alternative single or double walled
- 3 grounding points (bottom, side panel and front door)

Blank Plates

STL steel 19" blank plates are suitable for all 19" racks and frames which utilize profiles with square cage nut holes. This supports air flow characteristics of the rack. There are two options based on installation type, screwed and toolless. With toolless models, fitting is simple and does not require any tools. These plates are available in plain and slotted types, based on requirements.

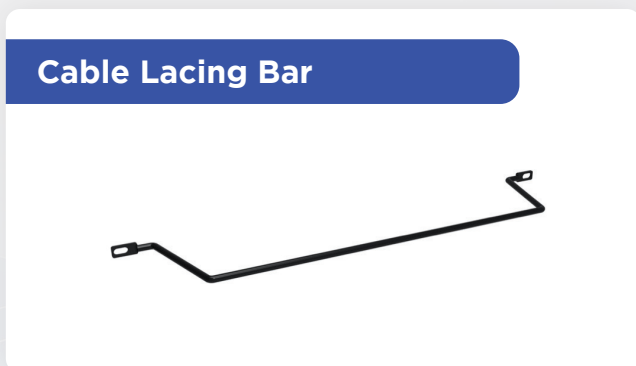


Product Code/ Part No.

Code	Height (mm)	Width (mm)	Depth (mm)	Rod Thickness
STLCLBOUBB	11.17	483	0	6.35
STLCLB2UBB	11.17	483	50.8	6.35
STLCLB4UBB	11.17	483	101.6	6.35

Cable Lacing Bar

STL cable lacing bar (STLCLB) reduces strain on cables connected to a patch panel or device. Available in three depths the CLB is sold in packs of ten (10) to reduce packaging material.



Product Code/ Part No.

Code	Height (mm)	Width (mm)	Depth (mm)	Rod Thickness
STLCLBOUBB	11.17	483	0	6.35
STLCLB2UBB	11.17	483	50.8	6.35
STLCLB4UBB	11.17	483	101.6	6.35

ONU Wall Racks

STL Residential ONU wall racks are designed to provide superior performance on cabling and networking infrastructure. These ONU wall series are available in 7U, 9U, 12U, and 16U heights with 600x150mm and 600x300mm sizes. These ONU wall racks house 19" standard mounting devices and provide quick and easy access to equipment kept inside.



Product Code/ Part No.

SO	60	15	07
Family	Width	Depth	Depth
SO - ONU Cabinet	60 - 600mm	15 - 150mm	07 - 7U
		30 - 300mm	09 - 9U
			12 - 12U
			16 - 16U

BK	01	A
Color	Width	Depth
BK - Black	01 - Hinged Glass Single Opening	A - Assembled
LG - Light Grey	02 - Hinged Solid Metal Single Opening	
	03 - Hinged Flat Perforated Single Opening	

STL | beyond tomorrow



Scan Me

ABOUT STL - STERLITE TECHNOLOGIES LTD.

A leading optical and digital solutions company.

STL is a leading global optical and digital solutions company providing advanced offerings to build 5G, Rural, FTTx, Enterprise and Data Centre networks. The company, driven by its purpose of 'Transforming Billions of Lives by Connecting the World', designs and manufactures in 4 continents with customers in more than 100 countries. Telecom operators, cloud companies, citizen networks, and large enterprises recognize and rely on STL for advanced capabilities in Optical Connectivity, Global Services, and Digital and Technology solutions to build ubiquitous and future-ready digital networks. STL's business goals are driven by customer-centricity, R&D and sustainability. Championing sustainable manufacturing, the company has committed to achieve Net Zero emissions by 2030. With top talent from 30+ nationalities, STL has earned numerous 'Great Place to Work' awards and been voted as the 'Best Organisation for Women'.

STL has a strong global presence in India, Italy, the UK, the US, China, and Brazil.