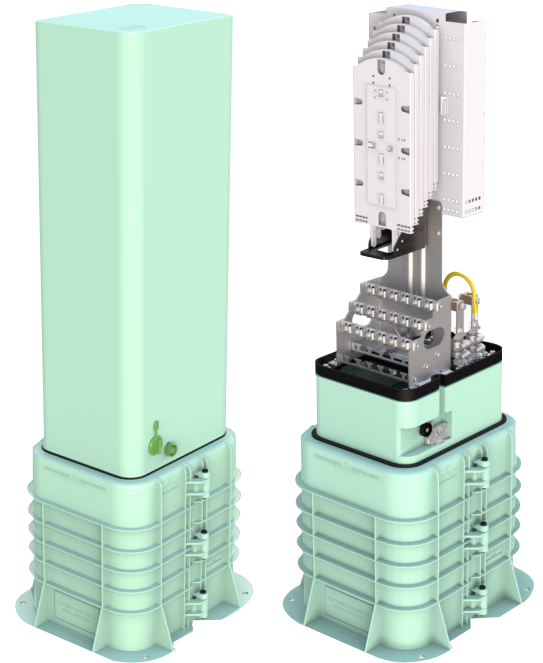


OptoPed

Performance Enhancing Distribution



Product overview

STL OptoPed optical pedestal is built with carrier-grade engineering materials for lasting environmental endurance. These pedestals are designed and tested to withstand the harshest of environmental conditions, including floods, fires, Insects, fungi, cyclones and high-speed winds carrying dust and debris. This product is typically designed in light green color that goes well with the surroundings.

It primarily consists of the bottom assembly, top casing, mounting frame unit, storage management unit, grounding unit, and splice tray mounting hub. The base of this pedestal can be opened up to 150 degrees on its hinges providing the maximum flexibility and space to the onsite installer. Further, the installer can reconfigure the hinges to open the base in the most convenient manner. These pedestals come in different variants based on the operator's requirement for fiber splicing. Currently, STL provides two versions with 144 and 288 fiber splicing capacities and can design more basis requirements. All these pedestals come with auto lock and manual lock configuration and both are operable using only the Telecom-CAN-216 tool.

Product features

- The product is built with carrier-grade engineering materials for lasting environmental endurance.
- The product color being light green blends well with the surroundings.
- The product offers protection to the encased optical system and internal components from floods, fires, insects, fungi, cyclones and high-speed winds carrying dust and debris.
- A unique split base allows the base to be opened at 150 degrees on its hinges. The product showcases a special feature where the installer can reconfigure the Hinges based on the on-site decision as to which side the base has to open to suit the installer's convenience.
- The product is available in both auto-lock and Manual Lock configurations and both are operable using only the Telecom-CAN-216 Tool.

Ordering Information

- PEDSM01CU03 (Pedestal basic without auto lock)
- PEDPLO1CU03 (Pedestal basic with auto lock)

Product Details

Product Size

- 10" X 8" Rectangular
- Buried Depth: 11"
- Height Above Grade Level: 27"
- Easy to operate locking mechanism using 216-CAN Wrench



Bottom Assembly and Mounting Frame Unit



Top Casing

Optical Fiber / Modules Loose Tubes Storage Capacity

- Mid-Span Loose Tube / Modules Storage Capacity: 3.4m (11 ft)
- Distribution Cable Loose Tubes/ Modules: 1.5 m (5 ft)



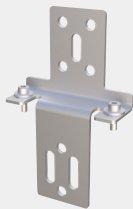
Storage Management Unit

Cable Capacity

- Primary OF Cable 144F / 288F Armored: 1 (Mid-Span).
- Distribution OF Cable 144F Armored: 2 Nos.
- Flat Drop Cable 5mmX8mm / 5mmX10mm: (8+8) 16 Nos.

Grounding

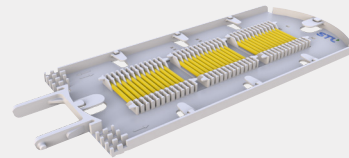
- Central Grounding Plate with Top and Bottom accessibility and multiple cable mounting provision
- #6 AWG Insulated Grounding / Bonding Harness 6" Length
- #6 AWG Bare Solid Copper Grounding Wire 16" Length with Wire Clamps
- Grounding Rod (Copper Coated) Length 600mm (23.6")



Grounding/ Bonding Unit

Splicing Capacity

- Splice Trays: 6 Nos.
- Single Fibre Single Stacking: 144F Splices.
- Single Fibre Double Stacking: 288F Splices.
- 12F Ribbon Fibre: 864F Splices.



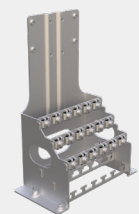
Splice Tray

Mounting Bracket

- UMC Galvanized Stake and Mounting Accessories Kit
- 24" UMC Galvanized Stake and Mounting Hardware Kit
- 36" UMC Galvanized Stake and Mounting Hardware Kit



Splice Tray Mounting Hub

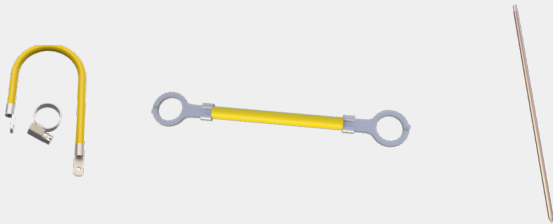


Mounting Bracket

Accessories Ordering Information:

Grounding Rod And Kit - FCFTTHR02S

- #6 AWG Insulated Grounding / Bonding Harness 6" Length to Connect Armor Cable to Grounding Bracket - 2 Nos.
- #6 AWG Bare Solid Copper Grounding Wire 16" Length with Wire Clamps Clamps for Connecting Grounding Bracket to Grounding Rod
- Grounding Rod (Copper Coated) Length 600mm (23.6")



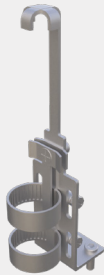
Mounting Accessories - FCFTTHFD0101S

- 24" UMC Galvanized Stake and Mounting Hardware Kit
- 36" UMC Galvanized Stake and Mounting Hardware Kit



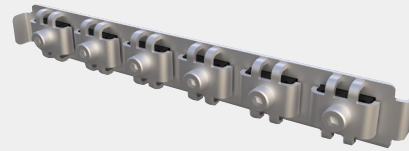
Primary And Distribution Cable Mounting Accessories - FBPL01DT03

- OptoPed is suitable for 2 primary cables (Mid Span) and 2 distribution cables.



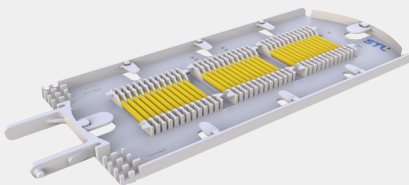
Drop Cables Mounting Accessories - FCFTTHFD04S

- 5x8 / 5x10 Drop Cable Clamping Hardware Kit Supports 6 Flat Drop Cables (If you intend to install 18 drop cables, 3 kits to be ordered)



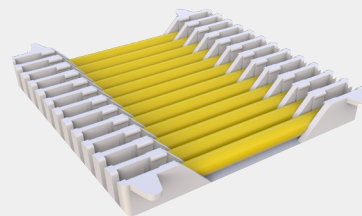
Splice Trays With Transparent Cover - FTTPLO1ST03

- Single Stacking 24 Splices
- Double Stacking 48 Splices
- 12F Ribbon Splice Tray



Splice Protection Sleeves - FCFTTHS03S

- Ø3mm X 45mm (50 NOs.)
- Single Stacking - 144 Splices
- Double Stacking - 288 Splices



03/012024

For additional information please contact your sales representative.

You can also visit our website at www.stl.tech

The information given herein, including drawings, illustrations and schematics are intended for illustration purposes only and is believed to be reliable. STL makes no warranties to its accuracy or completeness and disclaims any liability in connection with its use. STL obligations shall be only set forth in standard terms and conditions of the sale and in no case, STL be liable for any incidental, indirect or consequential damages arising out of sale, resale, use or misuse of the product. Users of STL products should make their own evaluation to determine the suitability of such each product for the specific applic