

# ODP

## FTTH - Building Cabling System



### Smart Cabling Solutions for Residential Environments

Opto Domus Products are a series of devices offered by Optotec for the installation of vertical multi-fibre cables or removable multi-bundles in residential indoor environments.

The installation of these products can take place both within new building passive multi-service infrastructures and on pre-existing infrastructures and therefore not yet equipped with adequate installation spaces.

The branching of multi-fibre cables that can be pulled out to individual single building apartments therefore takes advantage of paths already traced for other services, thus reducing installation dimensions and costs as much as possible. It however guarantees quality and reliability of the final wiring.

All Optotec devices accept cables with a diameter between 6.0mm and 8.2mm, typically from 12 to 24 optical fibres, and with an overall outer sheath of approximately 1mm with internal single-fibre modules 0.9 - 1.00mm.

Drop cables for single users have a nominal external diameter of  $3.0 \pm 0.1$  mm and a minimum thickness of 0.7mm.

### APPLICATIONS

- INTERNAL: Passive multi-service infrastructure of real estate units:
  - risers
  - cable ducts
  - multiservice cabins
  - corrugated pipes of new construction

### TECHNICAL FEATURES

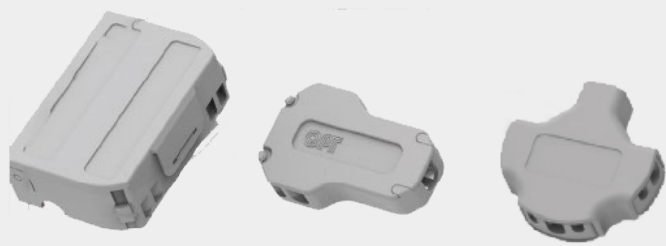
- Guaranteed minimum radius of curvature of the optical fibres – offers greater performance reliability
- Full front accessibility - facilitates installation operations
- Re-accessibility - facilitates maintenance operations
- Clean and simple design – results in low environmental impact

ODP ITEM NAME	MAX DIMENSIONS (mm)				TECHNICAL FEATURES			MATERIAL
	WIDTH	HEIGHT	DEPTH	WEIGHT (GR)	BRANCHING TUBES		FIBRE SPlicing	
					MONOFIBRE	MULTIBUNDLES		
BOX MINI RISER	70	50	25	40	up to 6	-	up to 6	Plastic - RAL9016 (Traffic White)
BRANCHING I	60	40	13	25	up to 8	up to 2	-	
BRANCHING II	40	40	10	15	up to 4	up to 3	-	

	WIDTH	HEIGHT	DEPTH	WEIGHT (GR)	FIBRE SPlicing	MATERIAL
BOX MINI RISER	3.0	1.4	Spool	10	-	External LSZH protective tube
BRANCHING I	5.0	3.5	Spool	60	-	
BRANCHING II	5.0	3.5	400	60	1	

*\*Internally it has a pull element in kevlar yarns to facilitate the insertion of optical fibres.*

FTTH - BUILDING CABLING SYSTEM ORDERING INFORMATION



SERIE NAME	ITEM NAME
Opto Domus Products	Box Mini Riser
	Branching I
	Branching II
	Multitube
	Singletube
	Splice

OPTO DOMUS PRODUCT

Floor Box  
ODP - Box Mini Riser

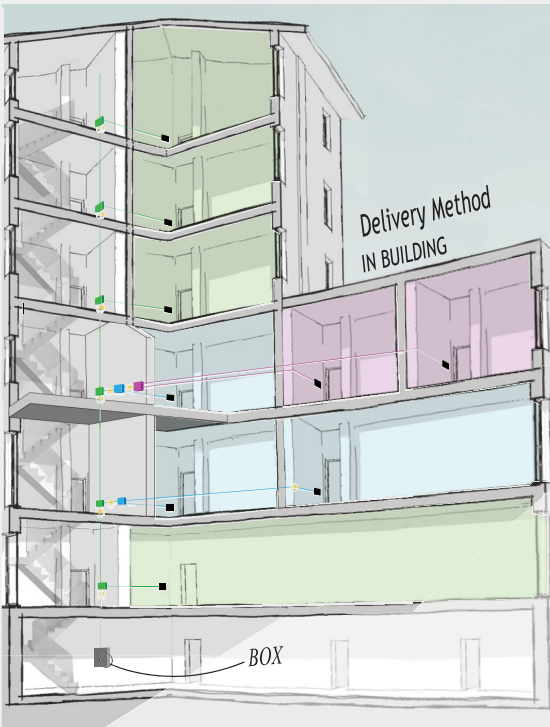
It guarantees the protection, splicing and branching of the vertical cable fibres; allows re-access to individual fibres / joints for the integration of new users and for ensuring a minimum radius of 15mm everywhere.

Primary Floor Branching Box  
ODP - Branching I

It protects and branches fibres coming out of the open window into the sheath of the multi-fibre cable. Allows the extraction of up to 8 fibres of the multi-fibre cable in 8 distinct protective tubes for each fibre respecting a minimum radius of curvature of 15mm. It also makes it possible to attach two additional groups of fibres extracted from the vertical cable inside two distinct multi-fibre protection tubes.

Secondary Branching Box  
ODP - Branching II

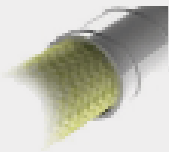
It protects and branches the fibres extracted from a master primary branch or from another secondary branch and conveys them in single- fibre and / or multi-fibre protection tubes. it is provided with four outlets for single-fibre tubes and three for multi-fibre tubes. Extremely compact, it is used inside circular junction boxes dia. 80mm depth 50mm or more.



Fibre Protective Tube

ODP - Multitube

Primary connection between the various branches, the multi-fibre tube is used to extract and protect the vertical cable in several modules. Internally equipped with a pull element to which to anchor the fibre kevlar, in case of long distances.



ODP - Splice

30mm long thermo-shrinking [B] protection tube [A] with two protective metal crimping rings [C]. It is used to join and extend the fibres contained in the fittings made with the Single tube protection tubes towards the single building apartment.

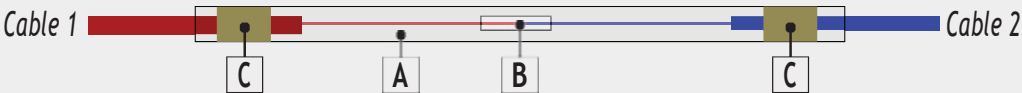


ODP - Singletube

Protective tube of the single module of the multi-fibre cable. Connect the Floor Boxes, the Master or Secondary Floor Branches to the stud of the single building apartment.



PRODUCT NAME	PACKAGING TYPE	MAX DIMENSIONS (mm)			WEIGHT (GR)
		WIDTH	HEIGHT	DEPTH	
ODP-box Mini Riser	Carton Box	355	125	100	
ODP-box Mini Riser	Carton Box	355	125	100	
ODP-box Mini Riser	Carton Box	355	125	100	
ODP-box Mini Riser	Carton Box	355	125	100	
ODP-box Mini Riser	Carton Box	355	125	100	
ODP-box Mini Riser	Carton Box	355	125	100	



The information given herein, including drawings, illustrations and schematics are intended for illustration purposes only and is believed to be reliable. However, STL makes no warranties to its accuracy or completeness and disclaims any liability in connection with its use. STL obligations shall be only set forth in STL standard terms and conditions of the sale and in no case, STL be liable for any incidental, indirect or consequential damages arising out of sale, resale, use or misuse of the product.

Users of STL products should make their own evaluation to determine the suitability of such each product for the specific application.