

DDMBOX 3, 2 e 1

Boxes With Double Metal Door



Boxes with double metal door are wall mounting boxes for the distribution of optical signals inside buildings, in the access networks and in private LAN for low-capacity optical cables.

DDMB boxes are divided into two distinct areas by two doors:

- 1) The left door protects the entry of the external network cables, handles uncut cable unsheathed and its eventual branch on a further drop cable. On this side it is possible to splice optical fibres into pigtails to the end users.
- 2) The right side allows to connect end users both in a direct-way (single cables, multifibre pre-wired or mounted on field) and splicing users' connections to pigtails.

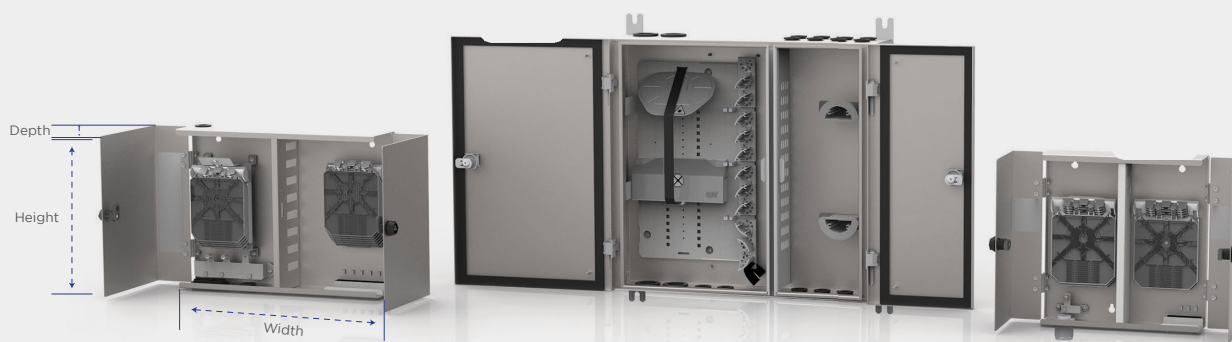
In order avoid unauthorized opening by third parts customized locking system and keys are provided upon request.

APPLICATIONS

- OSP Drop cable terminations in access networks
- Telecommunication enclosure for termination of optical cables

TECHNICAL FEATURES

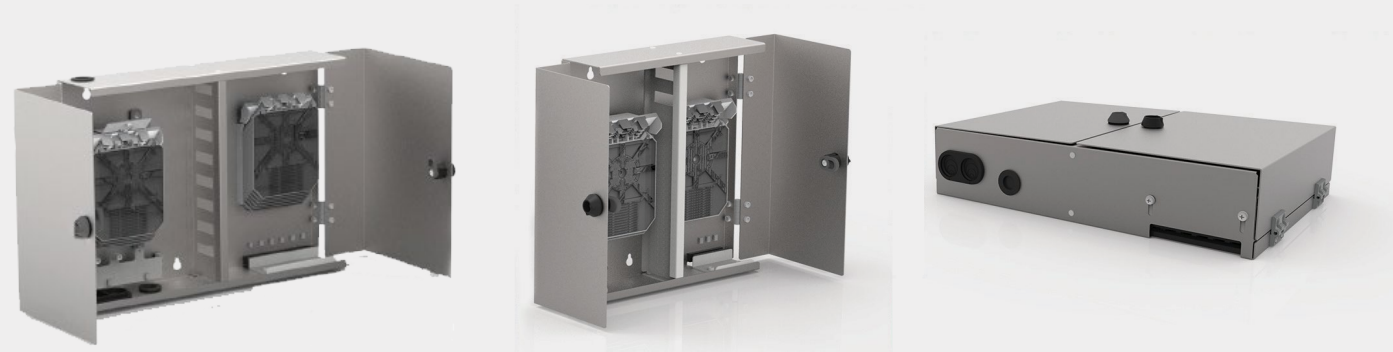
- Easy and structured two doors access with both left and right opening
- Separation between provider and user network, to ensure the fibre optics best management inside DDMB boxes
- Pre-terminated fibre and loose tube routings
- Access keys could be different upon customer's request



DDM BOX		MAX DIMENSIONS (mm)			CAPACITY						WEIGHT	COLOR	MATERIAL	STANDARD OF PROTECTION
		WIDTH	HEIGHT	DEPTH	MAX. SLPICE CAPACITY		MAX. PATCH CAPACITY		MAX. EXIT CAPACITY	MAX. ENTRIES CAPACITY				
					SX SIDE	DX SIDE								
SIZES	1	260	65	270	Up To 48 F.O.	Up To 48 F.O.	8 Standard	12 SFF	Multiple	1	2,2 kg	RAL 7035	Painted Steel	IEC 60529 IP43
	2	370	80	270	Up To 96 F.O.	Up To 48 F.O.	36 Standard	48 SFF	Multiple	1+2	3,6 kg	RAL 7035	Painted Steel	IEC 60529 IP43
	3	472	115	430	Up To 432 F.O.	-	48 Standard	% SFF	8+8	2+2	8 kg	RAL 7035	Painted Steel	IEC 60529 IP43

DDMBOX 1 AND 2 - ORDERING INFORMATION

SERIE NAME	DIMENSION	TYOLOGY	SPLICE ARRAY TRAY TYPES	TOT SPLICE NUMBER PER TRAY	CONNECTOR TYPE	TOT No. ADAPTER	TOT No. PIGTAILS
DDMBOX	1	MIX (PATCH & SPLICE)	RH	12	DIFFERENT TYPES ON REQUEST	UP TO 8	UP TO 12
	2					UP TO 36	UP TO 84



DDMBOX 3 - ORDERING INFORMATION

SERIE NAME	DIMENSION	TYOLOGY	SPLICE ARRAY TRAY TYPES	TOT SPLICE NUMBER PER TRAY	CONNECTOR TYPE	TOT No. ADAPTER	TOT No. PIGTAILS
DDMBOX	3	M = MIX (PATCH & SPLICE) S = SPLICE (ONLY SPLICE)	SAMX	12	UP TO 36 -	UP TO 48 -	UP TO 96 -



PRODUCT NAME	PACKAGING TYPE	MAX DIMENSIONS (mm)			GROSS WEIGHT (KG.)
		WIDTH	HEIGHT	DEPTH	
DDMBOX1	Carton box	300	300	140	2, 5
DDMBOX2	Carton box	400	300	140	3, 9
DDMBOX3	Carton box	500	450	160	8, 5

The information given herein, including drawings, illustrations and schematics are intended for illustration purposes only and is believed to be reliable. However, STL makes no warranties to its accuracy or completeness and disclaims any liability in connection with its use. STL obligations shall be only set forth in STL standard terms and conditions of the sale and in no case, STL be liable for any incidental, indirect or consequential damages arising out of sale, resale, use or misuse of the product.

Users of STL products should make their own evaluation to determine the suitability of such each product for the specific application.