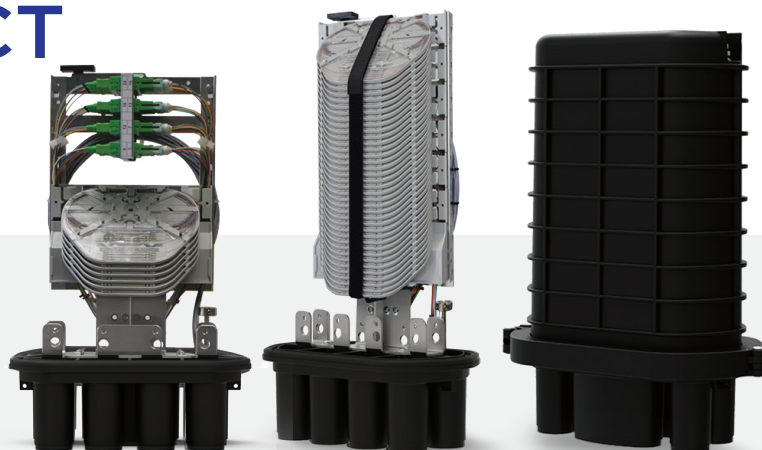


# PATCH AND SPLICE COMPACT CLOSURES

## CODC2 - DOC2

Optotec has a wide range of closures catering to every requirement of telecommunications network. Their salient features are as under:

- Suitable for watertight containers IP68 (IEC 529), traditional cables and micro-cables with G652 and G657 fibres
- Optotec CODC2 are splice only closures
- Optotec CDOC2 are patch and splice closures
- Inside a STACK is used to fix SAMX splicing modules on one side, while the other side provides storage space for uncuttable cables
- The CDOC2 also include a patch panel for SC or LC duplex adapters.
- All closures are equipped with a locking system made of a CLAMP and a specific silicone gasket that guarantees the seal
- Every Optotec closures has a RFID system



## APPLICATIONS

- For in line closures, branch joints and pothead
- Aerial networks - for poles and walls
- Underground networks - inside handholes / manholes

## TECHNICAL FEATURES

- High quality, watertight thermoplastic material
- BASE and DOME (IP68, IEC 529) with clamp and O-ring closing system
- High quality, watertight thermoplastic material
- BASE and DOME (IP68, IEC 529) with clamp and O-ring closing system
- Easy access to the junction area through CLAMP opening equipped with a guided locking
- Dedicated area for uncut fibres or continuous cables (loop cables)
- Configurability of the internal STACK with SAMX modules according to the junction's purpose
- Suitability of the BASE with both the heat-shrinking sealing kit and cold sealing kit (BASE A)



ORDERING INFORMATION

SERIES NAME	BASE TYPE	DOME TYPE		ADAPTERS NO. SC OR LC TYPE
CODC2 - Compact Optical Distribution Closures version 2 - SPLICE ONLY	A	A	B	-
CDOC2 - Compact Demarcation Optical Closures version 2 - PATCH & SPLICE	A	A	-	24

OPTOTEC CLOSURES PATCH & SPLICE CAPACITY

Depends on Adapters, Splicing Modules Quantity and Type Mounted on The closures.  
All Closures are Useable To Combine Different Types of modules samx according to all Specific Needs.

CLOSURES COMPONENTS AND CONFIGURATIONS

**OPTOTEC CDOC2 AA**

H 380 mm  
W 280 mm  
D 150 mm

UP TO 96 FIBRS SPLICE CAPACITY  
1 SAMX HD MODULES AND  
UP TO 24 ADAPTERS

**OPTOTEC CODC2 AA**

H 380 mm  
W 280 mm  
D 150 mm

UP TO 280 FIBRES SPLICE  
CAPACITY 4 SAMX HD MODULES

**OPTOTEC CODC2 AB**

H 450 mm  
W 280 mm  
D 150 mm

UP TO 432 FIBRES SPLICE  
CAPACITY 6 SAMX HD MODULES

**COMPACT DOME A**

**COMPACT DOME B**

**CLAMP LOCKING CLIP**

**COMPACT BASE A TYPE**  
1 OVAL PORT  
6 ROUNDS

PACKAGING

PRODUCT NAME	PACKAGING TYPE	DIMENSIONS (mm)			GROSS WEIGHT (kg.)
		WIDTH	DEPTH	HEIGHT	
CODC2-AA	Carton box	300	170	400	-2,5
CDOC2-AA	Carton box	300	170	400	-2,5
CODC2-AB	Carton box	300	170	470	-3

The information given herein, including drawings, illustrations and schematics are intended for illustration purposes only and is believed to be reliable. However, STL makes no warranties to its accuracy or completeness and disclaims any liability in connection with its use. STL obligations shall be only set forth in STL standard terms and conditions of the sale and in no case, STL be liable for any incidental, indirect or consequential damages arising out of sale, resale, use or misuse of the product.

Users of STL products should make their own evaluation to determine the suitability of such each product for the specific application.