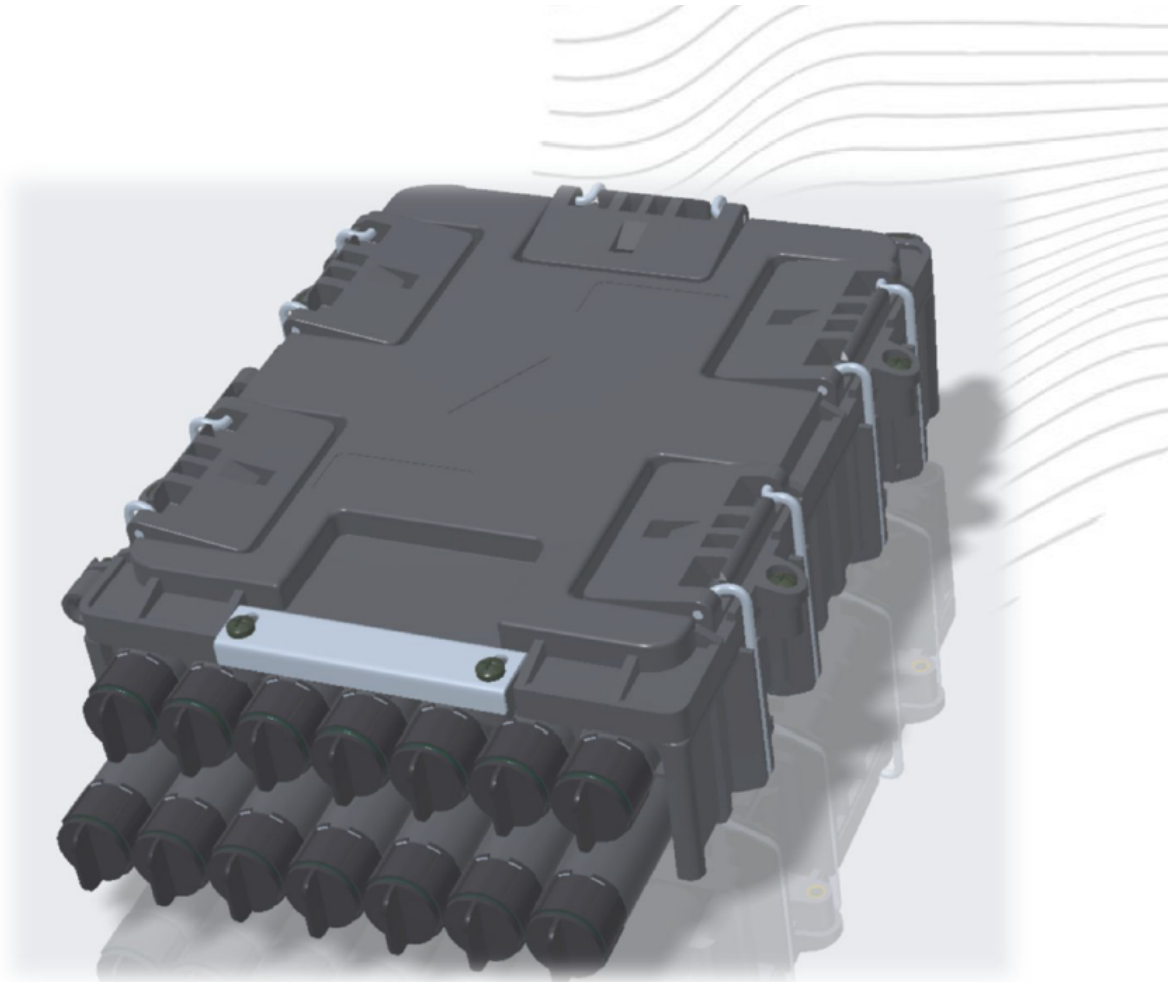


Title:  
**IP 68 BOX LGI  
-Pole and Chamber Mounting-**

Review	Date	Description	Prepared	Verified	Approved
00	18/10/2021	<b>ID12171</b> First issue	Kaj Kulstad	Chris Taylor	Chris Taylor

# IP 68 BOX LGI -Pole and Chamber Mounting-



Title:

**IP 68 BOX LGI  
-Pole and Chamber Mounting-**

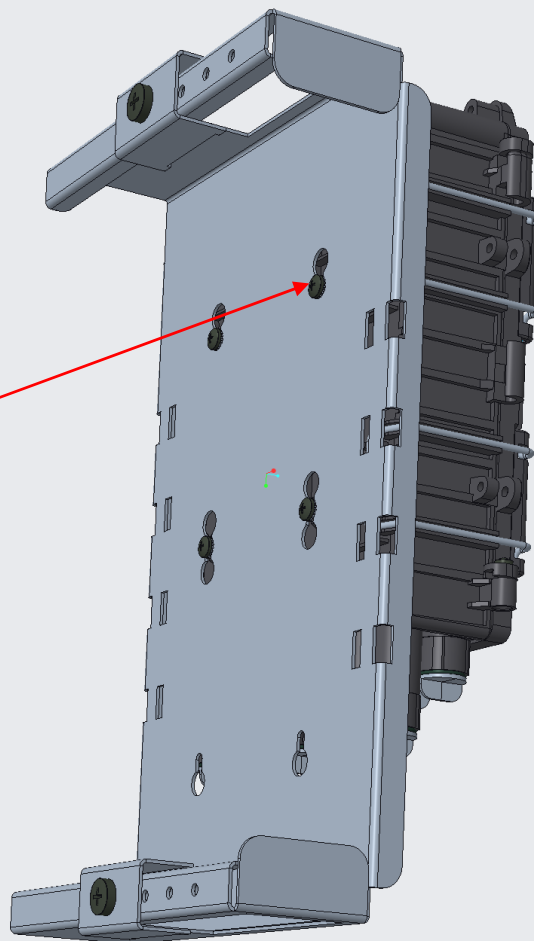
**CONTENTS**

- 1. CHAMBER MOUNTING
- 2. POLE MOUNTING - Single DP
- 3. POLE MOUNTING - Double DP

**1. CHAMBER MOUNTING**

Start using the ports towards the lower rear first.

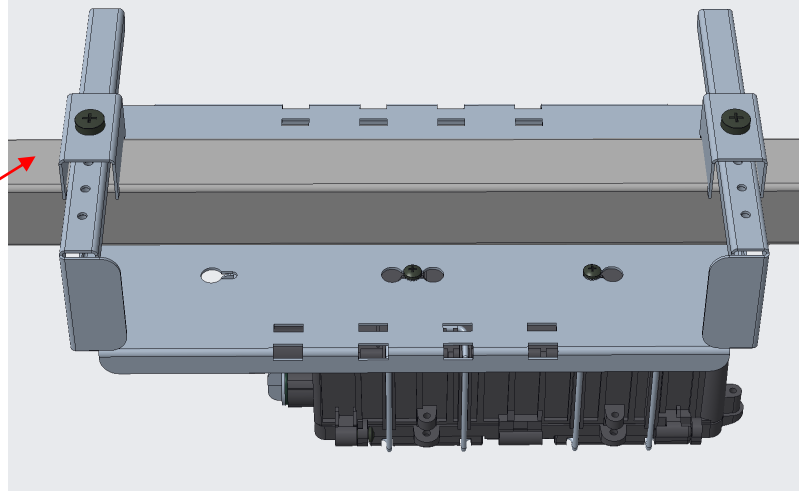
Fit DP to chamber bracket using positions shown.



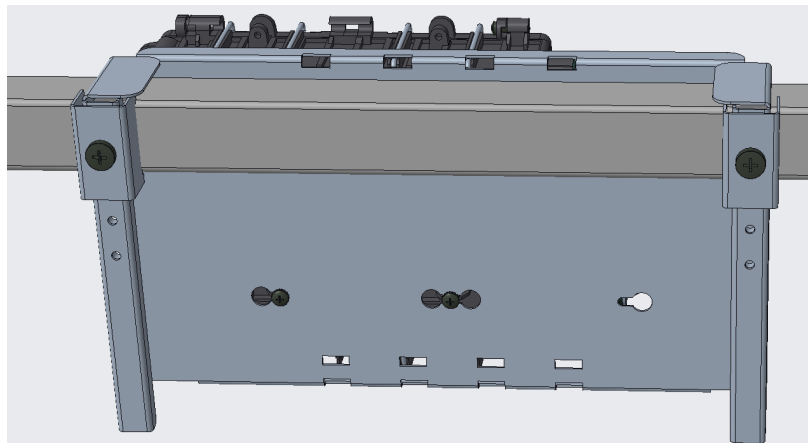
Title:

**IP 68 BOX LGI  
-Pole and Chamber Mounting-**

Slide assembly onto Unistrut and tighten once in position.  
Face down or left and right options are available – This is face down



This is right hand mounted

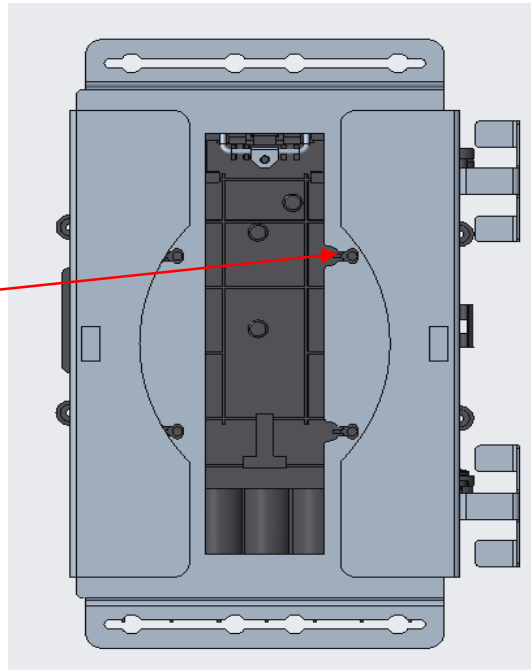


Title:

IP 68 BOX LGI  
-Pole and Chamber Mounting-

## 2. POLE MOUNTING - Single DP

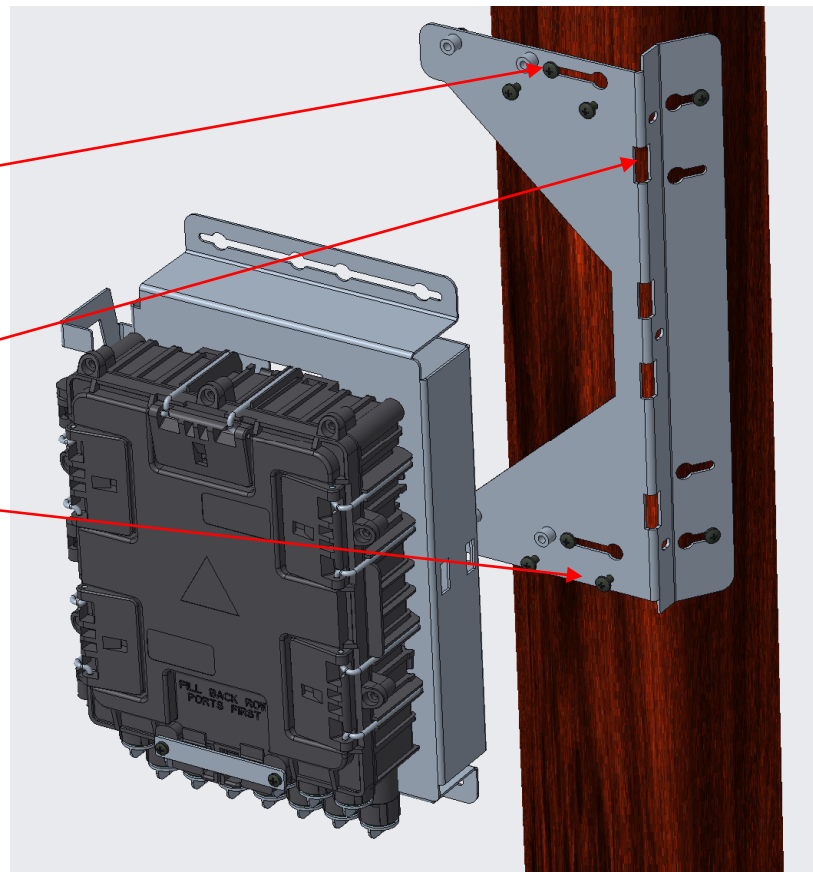
Use inserts on rear of DP to attach DP bracket



For single pole mount, fix pole bracket as shown using screws top and bottom.

For steel or concrete poles use strap these strap slots.

Pre assemble screws top and bottom to receive DP



Title:

IP 68 BOX LGI  
-Pole and Chamber Mounting-

3. POLE MOUNTING - Double DP

For double pole mount fix 2 pole brackets as shown using screws top and bottom.

For steel or concrete poles use these strap slots.

Pre assemble screws top and bottom on both brackets to receive DP

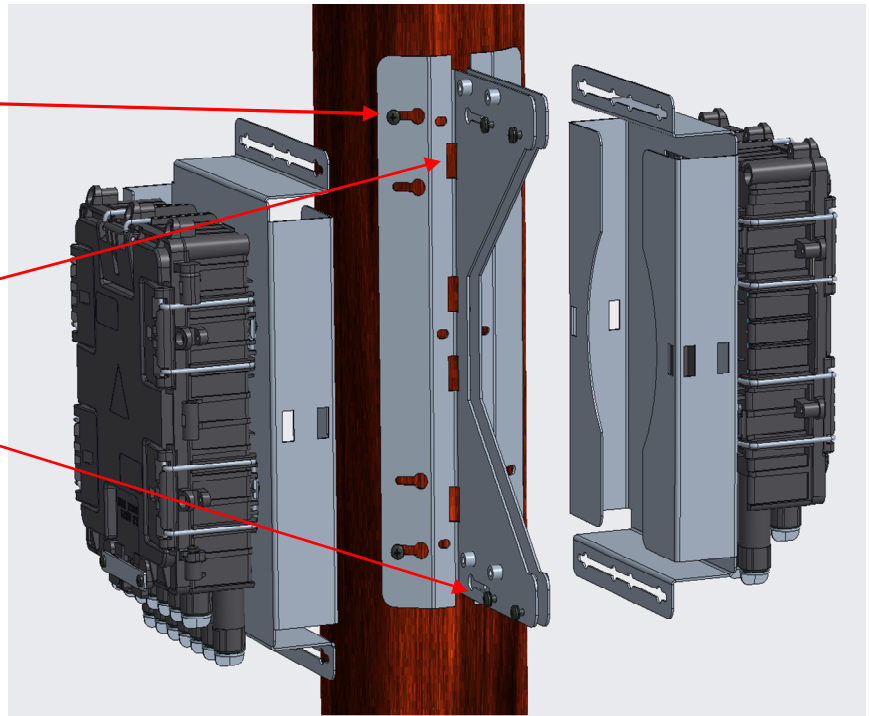


Image showing double pole mounting.

