

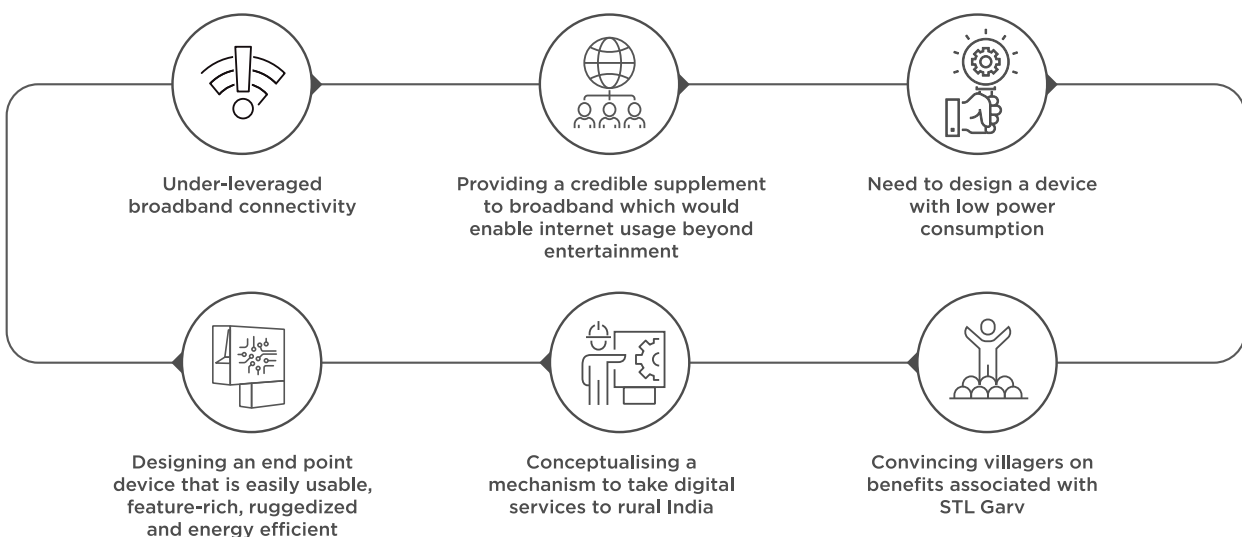
Digital inclusion that goes beyond broadband

PROJECT BACKGROUND

STL, a Data Networks Innovator, took the initiative of designing an integrated system, STL Garv, for empowering the people of rural India with digital services that can transform rural living. Garv is a supercomputer in the form of a kiosk that enables access to multiple coordinated digital infrastructure and services for rural communities. STL Garv is a combination of applied infrastructure and services platform that enhances technology adoption and usage. Garv has been implemented in three villages across 5 states of rural India – Telangana, Uttar Pradesh and Maharashtra.

Innovation for rural communities lies at the core of STL Garv.

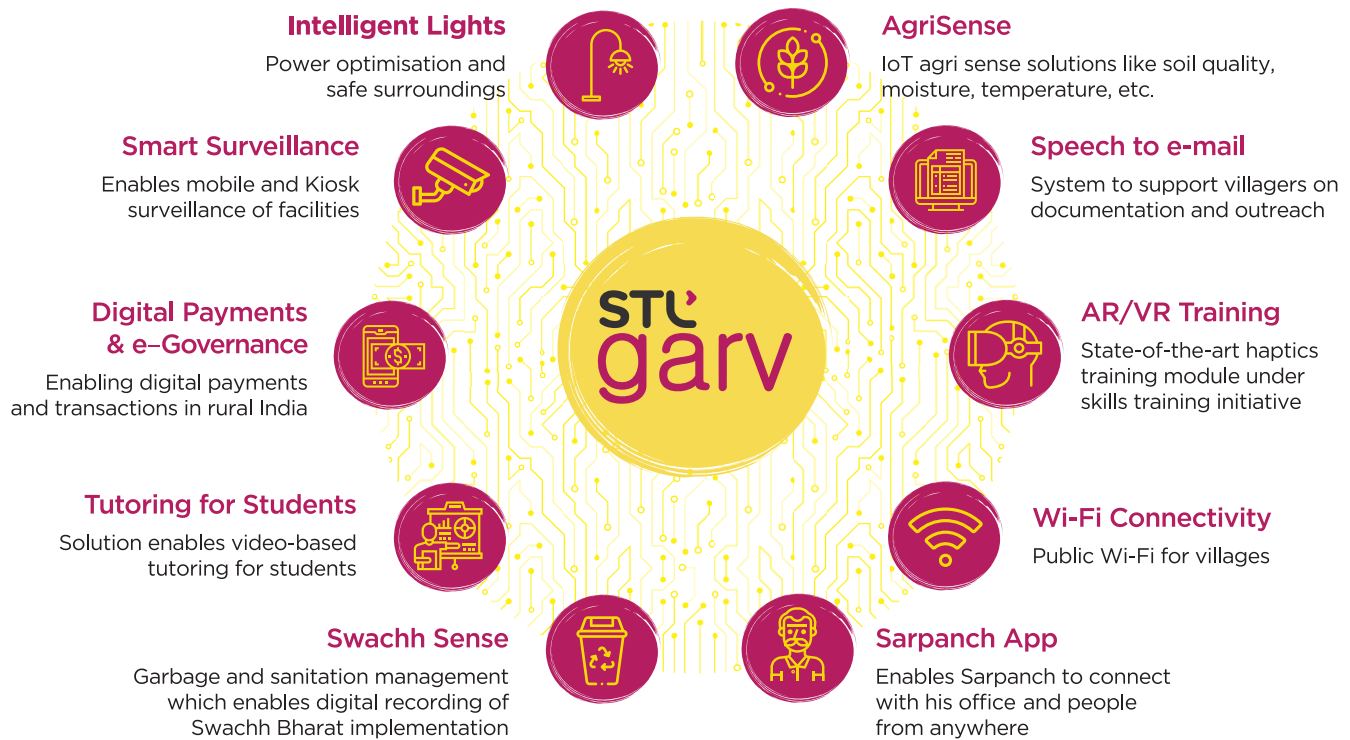
CHALLENGES THAT WE FACED (AND MITIGATED)



STL SOLUTION TO DELIVER EXCELLENCE

STL designed a STL Garv kiosk that offers multiple services to rural areas.. The kiosk, operated by a trained operator provided by STL team, can be housed in every village. STL Garv's system provides seamless, robust hardware and software to support villages' digital transformation. We at STL believe that digital inclusion doesn't end at broadband connectivity, rather it begins here.

Some village-specific Garv services



IMPACT DELIVERED BY STL Garv

27%
Increase in internet usage

76.2%
Increase in women using supplementary education

50%
Increase in usage of government applications

7,980
visitors

18,700
Unique sessions

**Based on actual pilot project data*

Disclaimer - All data is subject to change without prior notice to improve reliability, function or design or otherwise. STL Innovative Solutions Limited Inc., its affiliates, agents and employees and all persons acting on its or their behalf (collectively, "SISL") disclaim any and all liability for any errors, inaccuracies or incompleteness contained in any datasheet or any other disclosure relating to any product.