

CODF

Compact ODF

Optotec's Compact ODF is a revolutionary rack designed to manage all types of fibre cables in restricted spaces.

It is an ETSI-standard metal rack developed to be used as a small optical distribution frame, unbundling access head-end, or at customer premises environment. Its key features include:

- Each door and panel can be removed and locked by a handle
- Cable entrance and patchcord outlet are possible both in the top and in the bottom of the rack
- The sub-rack can be drawn out easily with free access to splicing and patching areas
- Its modular concept allows a basic rack to accommodate upto 5 modules for patching/splicing.

Optotec's Compact ODF capacity can vary from 120 fibres (two fibres per tray) to upto 240 fibres (four fibres per tray) with single-circuits fibre management.

Its Patch only version with preloaded adapters and without terminations is available for cross-connecting functions.

Optotec had pioneered the development of Compact ODFs. It is a very well known and extensively used product across the globe now.



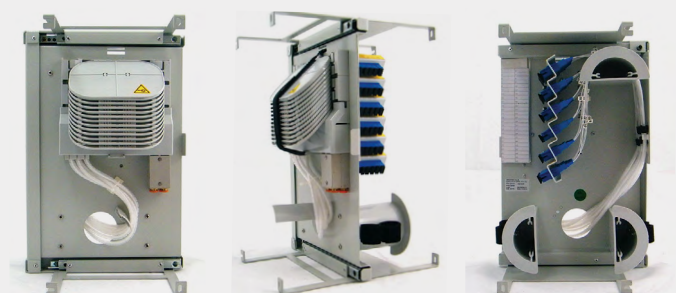
APPLICATIONS

- Unbundling access networks
- Small area central office
- Every side easy access

KEY FEATURES AND BENEFITS

- Compact multipurpose patch and splice rack and modules
- Modular concept, all panels are removable
- Patchcord management and extra-length storage

DESCRIPTION	CODF 3520239
Dimensions (mm)	2200 (h) 300 (w) 300 (d)
Colour	RAL-7035 (light grey Powder coated)
Rack capability	Up to 5 modules
Sub-rack capability	48 f.o. (SFF connectors) or 24 f.o.



REFERENCE PN	DESCRIPTION
CODF U-RACK 100 f.o.	Compact ODF Universal rack 100 f.o. 300x300x2200
CODF SUBRACK 24 f.o. SC-PC	Subrack for CODF U-RACK 100 f.o. preloaded with 24 SC/PC simplex and pigtails
CODF SUBRACK 24 f.o. LC-PC	Subrack for CODF U-RACK 100 f.o. preloaded with 12 LC/PC duplex and pigtails
CODF SUBRACK 48 f.o. SC-PC	Subrack for CODF U-RACK 100 f.o. preloaded with 48 SC/PC simplex and pigtails
CODF SUBRACK 48 f.o. LC-PC	Subrack for CODF U-RACK 100 f.o. preloaded with 24 LC/PC duplex and pigtails

The information given herein, including drawings, illustrations and schematics are intended for illustration purposes only and is believed to be reliable. However, STL makes no warranties to its accuracy or completeness and disclaims any liability in connection with its use. STL obligations shall be only set forth in STL standard terms and conditions of the sale and in no case, STL be liable for any incidental, indirect or consequential damages arising out of sale, resale, use or misuse of the product.

Users of STL products should make their own evaluation to determine the suitability of such each product for the specific application.