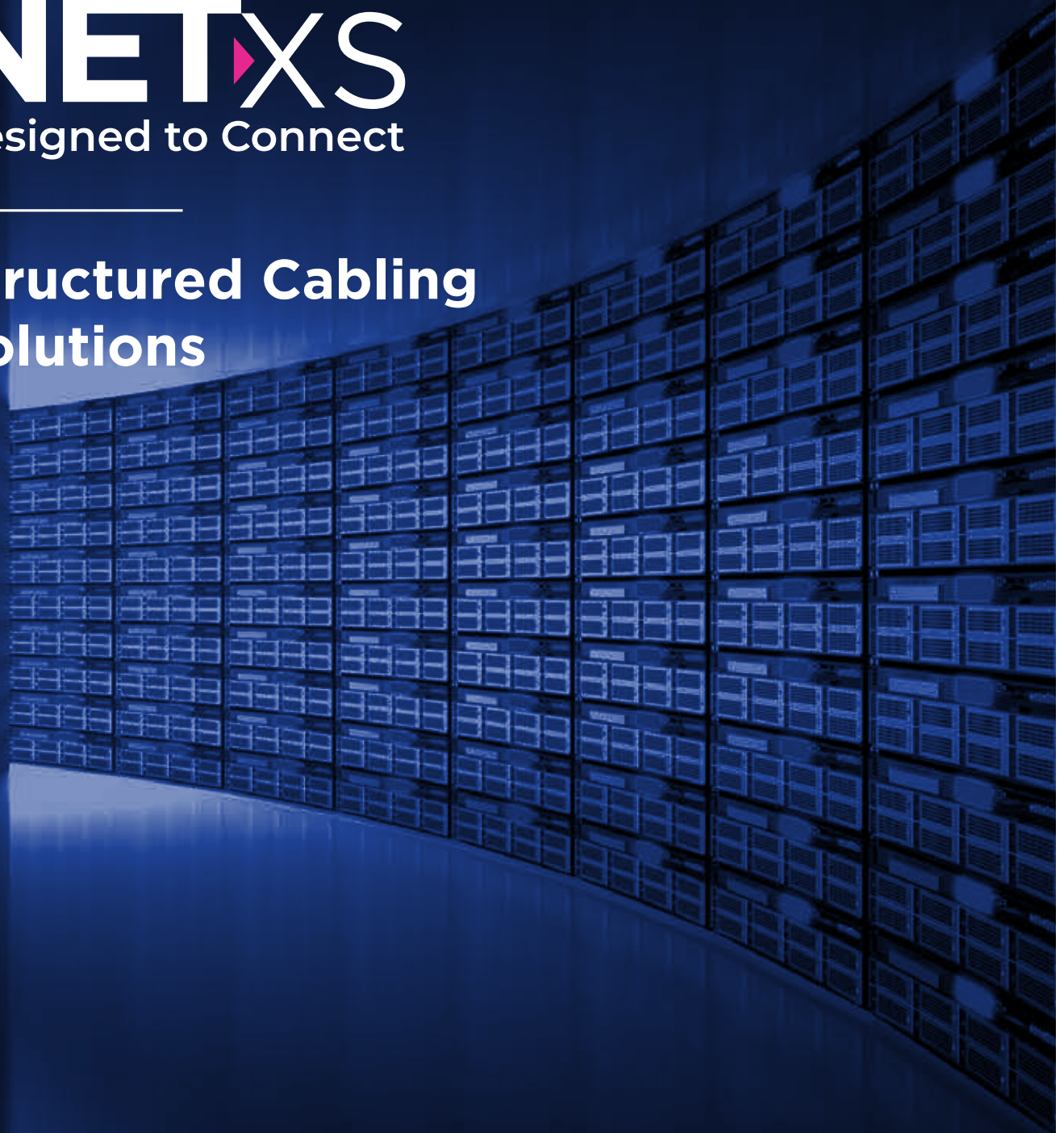


# NETXS

Designed to Connect

---

## Structured Cabling Solutions



## About STL

---



Research and Development  
**4 Innovation Centres**



Strong DNA of Innovation  
**582 Patents & Counting**



World class manufacturing facilities in  
**India, China, Brazil & Italy**



Mobility | Access | Core Network |  
Network Modernization |  
Data Center  
**End-to-End Solutions**

## Creating Hyper-Scale Digital Infrastructure

---



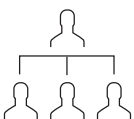
### TELCOS

To Connect each customer with the latest data applications while ensuring better experience



### CLOUD COMPANIES

To Enable future application and immersive content by bringing computer and storage capabilities to the edge



### CITIZEN NETWORKS

To Empower every citizen with high quality primary connectivity



### LARGE ENTERPRISES

To create secure networks for the specialized enterprise use cases

# NetXs

## One-stop-shop For Structured Cabling



### Global Logistics and Value Add Services

- Well established Global Sourcing and an Efficient Supply chain management
- Application Engineering support to Customer's Technical development
- Eco-Friendly Certified Reelex Packaging



### Automated Precision Manufacturing

- 2nd Largest Data Cable Manufacturing Plant in the World
- Copper and Fibre Engineering Excellence Customized Solution development Competency
- Zero Waste to Landfill Certified Plant



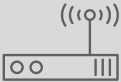
### International Testing and Quality Standards

- 4 Layers Extruders, Analyzer Test Equipment up to 4GHz BW
- ETL,UL & CPR approved Product Range
- Specialty Product Experience Lab (SPEL) for Field Condition Testing & PoE Testing
- New Application based co-development for Emerging Applications (SPE/ Wifi6/PoE++)

# Best Suited Cabling Media To Support Emerging Applications



Point of Sale (POS) System



Wireless Access Points



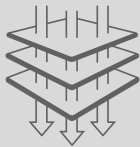
Smart Lighting



Connected Vehicles



IP Telephony



Thermally stable upto 90W PoE deployment

**4PPoE**

IEEE802.3bt compliant



Scalable and adaptable for future network requirements



Safe with large bundle sizes



# Our Range Of NetXs Offerings

---



## Cat 5E U/UTP

- High quality performance and signal transfer due to low Insertion loss and NEXT
- Suitable for PoE/ PoE+ applications with operating temperature supported upto 70°C



## Cat 5E F/UTP

- Superior NEXT Margin
- Easy sheath stripping with Rip cord
- Suitable for PoE/ PoE+ applications with operating temperature supported upto 70°C

## Cat 6 U/UTP

- High quality performance and less downtime due to low Return loss
- Suitable for PoE/ PoE+ applications with operating temperature supported upto 70°C



# Our Range Of NetXs Offerings



## Cat 6A U/UTP Special Filler

- Flame retardant design
- Compliant with AXT test in field conditions
- Space Optimisation with small cable diameter
- Superior signal transmission characteristics



## Cat 6A U/FTP

- Adheres to 100 mt. Horizontal link and delivers low TCL
- High crush resistance with triple layer insulation
- Suitable for PoE/ PoE++ applications with operating temperature supported upto 70°C

## Cat 6A U/UTP Special Jacket and Filler

- Superior performance with reduced (AXT), upto 100m horizontal link test compliance
- Adherence with global standards ANSI/TIA 568.2-D, IEC 61156-5, ISO/IEC 11801
- Small cable diameter
- Thermal stability upto 90W for PoE/ PoE++ applications



# Our Range Of NetXs Offerings



## Cat 6A F/FTP

- Space Optimisation with small cable diameter
- Adheres to 100 mt. Horizontal link and delivers low TCL
- High crush resistance with triple layer insulation



## Cat 6A F/UTP

- Space Optimisation with small cable diameter
- Flame retardant design
- Superior signal transmission characteristics



## Cat 7A S/FTP |



- Adheres to 100 mt. horizontal link and delivers low TCL
- High crush resistance with triple layer insulation
- Flame retardant design
- Superior protection against cross-talk and reduces EMI





**About STL - Sterlite Technologies Ltd**

**STL is an industry-leading integrator of digital networks.**

Our fully 5G ready digital network solutions help telcos, cloud companies, citizen networks, and large enterprises deliver enhanced experiences to their customers. STL provides integrated 5G ready end-to-end solutions ranging from wired to wireless, design to deployment, and connectivity to compute. Our core capabilities lie in Optical Interconnect, Virtualised Access Solutions, Network Software, and System Integration. We believe in harnessing technology to create a world with next-generation connected experiences that transform everyday living. With a global patent portfolio of 582 to our credit, we conduct fundamental research in next-generation network applications at our Centre of Excellence. STL has a strong global presence with next-gen optical preform, fibre, cable, and interconnect subsystem manufacturing facilities in India, Italy, China, and Brazil, along with two software-development centers across India and a data centre design facility in the UK.

**For more information visit**

visit: [stl.tech](http://stl.tech)

Or

Contact: Aman Arora (Global Sales Account Manager), E-mail: [Aman.arora@stl.tech](mailto:Aman.arora@stl.tech)