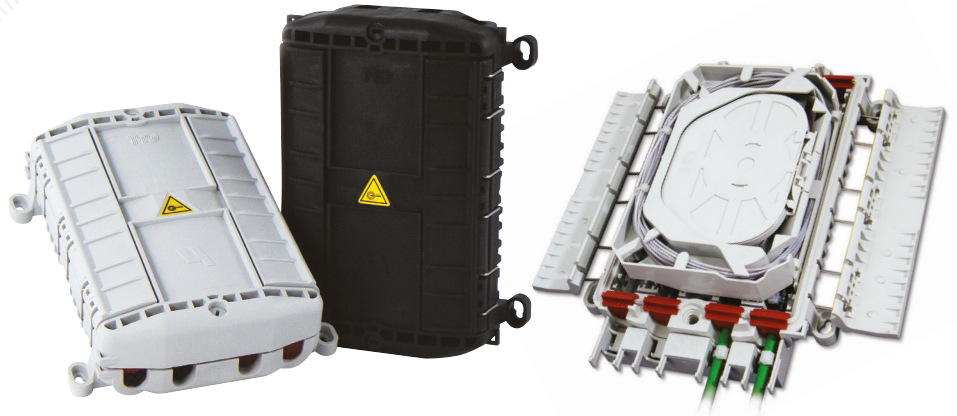


μODC

Micro Optical Distribution Closures



The Optotec MicroODC is a compact and versatile splice closure designed for FTTH networks.

It provides IP68 environmental protection, IK10 impact protection, and is ≤ 2 litres in volume. It can be installed in underground chambers, direct buried, pole mounted, or attached to building facades.

The MicroODC can be installed in-line, butt-end, or tap-off, and has a splice capacity up to 96 fibres. There is also the ability for cable mid-span access for uncut looped tube applications with secure internal cable management and controlled fibre raceways with a radius $>30\text{mm}$ for fibre strand integrity.

The closure lid and cable entry ports are mechanically sealed and there are a wide range of cable gaskets available, capable of provisioning up to 18 drop cables with main cable diameters of up to 16mm.

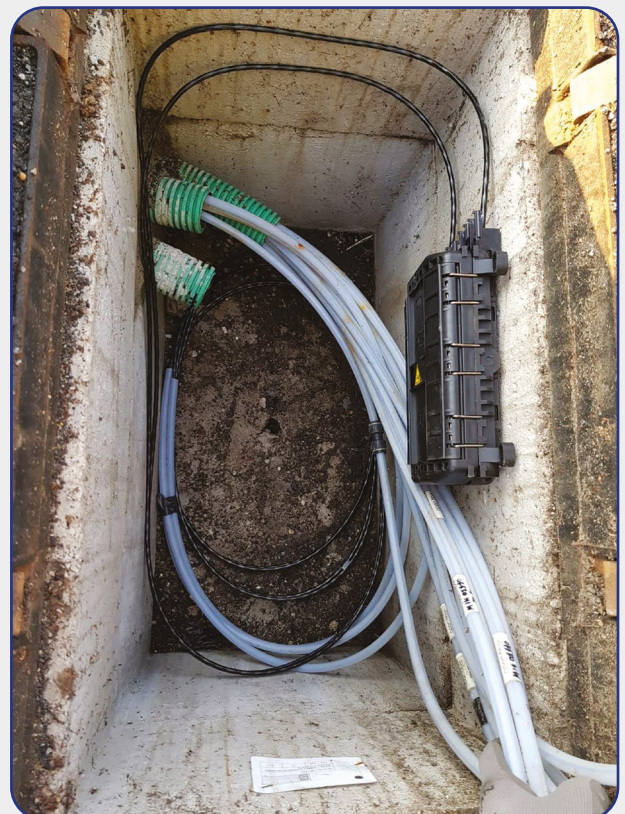
The MicroODC is part of the family of Optotec Splice Closures which use the SAM splice tray modules with heatshrink or fibreclip splice protectors with support for passive optical splitters if required.

APPLICATIONS

- FTTX networks
- Aerial, facade, underground chamber, direct buried
- In-line, butt, tap-off configuration

TECHNICAL FEATURES

- ITU-T G.652 and G.657 fibre compatible
- Positive fibre management through min. bend radius protection
- Volume Size $\leq 2\text{liters}$
- Highly reliable - IP68 and IK10
- Splice positions up to 96f heatshrink or 72f crimp splice protectors
- User-friendly latch closing system
- Main Cables 4-16 mm - Drop Cables 2-7mm
- Standard configuration cables in / out - 2 feeders + up to 18 drops
- Splitters trays available for GPON configurations
- Operating temperature -40°C up to $+70^{\circ}\text{C}$
- ROHS and eco-friendly



MICRODC ORDERING INFORMATION

PRODUCT LINE	SERIE NAME	TYPE	CONFIGURATION	COLOR TYPE
Micro Closures	MICRODC (Micro Optical Demarcation Closure)	LT (Loose Tube)	BASIC*	Gray RAL 7035
		MS (Micro Sheath)		Black RAL 9005

* THE BASIC CONFIGURATION OF OPTOTEC MICRODC INCLUDES - 1 SEALING SET, 4 BLIND GASKETS, EXTERNAL CABLE PLATE

The MicroDC closure uses the Optotec **SAMR** high-density splice array modules with splice capacities of up to 96 fibres. Cable sealing gaskets kits cover a wide range of cable diameters for each input / output port.

Your Optotec representative can assist in selecting the correct **SAMR** splice modules and sealing gaskets for your needs.

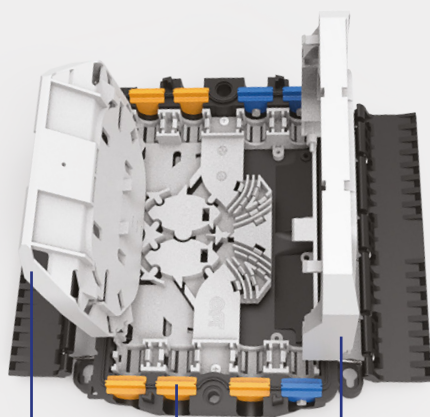
Other optional kits available:

- **MICRODCKIT-VALVE** kit: Used as a pressurised air flash test point (air must be released after test).
- **MICRODCKIT-GROUNDING BOLT** kit: Required for cable shield grounding.

MICRODC BASIC, COMPONENTS, CONFIGURATIONS AND DIMENSIONS

MicroDC LT

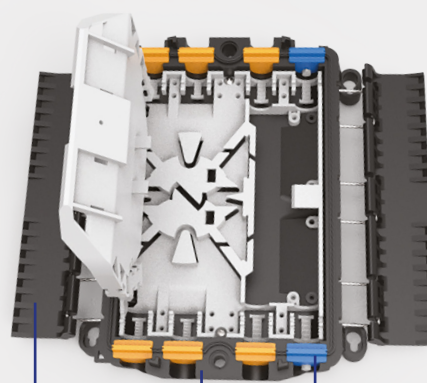
This version of the MicroDC is suitable for loose tube, uncut, mid-span cable modules routings and management. The basket allows storage of up to 12 meters 2.6 mm tubes.



SPLICE TRAYS GASKET KITS BASKET

MicroDC MS

This version is designed to accommodate and to protect micro-sheath flexible cable modules. A large storage area under the incoming fibre organizer safely contains the uncut modules.



SIDE LATCH MICRODC BASE GASKET KITS



MAX DIM.
Width 240 mm
Height 65 mm
Depth 155 mm